

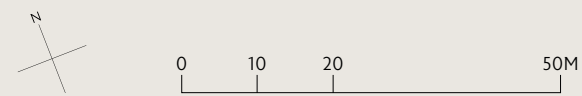


Artist's Impression

## Welcome Home

As day turns to dusk, journey home to the beautiful Royalgreen. 285 exquisite freehold homes along Anamalai Avenue, just off Bukit Timah Road in prime District 10. The exclusive residential enclave is surrounded by low-rise private houses. You'll see neighbours going for an evening jog or walking their pampered pooches, enjoying the lush, tranquil surrounds.

# Site Plan



Artist's Impression

# Roof Plan



Artist's Impression

## FACILITIES

- |                          |                         |                                 |
|--------------------------|-------------------------|---------------------------------|
| 1 Arrival Lounge         | 7 Poolside BBQ Pavilion | 13 Clubhouse                    |
| 2 Forest Grove Courtyard | 8 Spa Pool              | a. Function Room                |
| 3 Central Green          | 9 Pool Deck             | b. Party Room                   |
| 4 Play Deck              | 10 50m Lap Pool         | c. Reading Room                 |
| 5 Children's Playground  | 11 Canopy Deck          | d. Children's Indoor Play Area  |
| 6 BBQ Pavilion           | 12 Children's Pool      | e. Gymnasium                    |
|                          |                         | f. Party Deck                   |
|                          |                         | g. Changing Rooms & Steam Rooms |

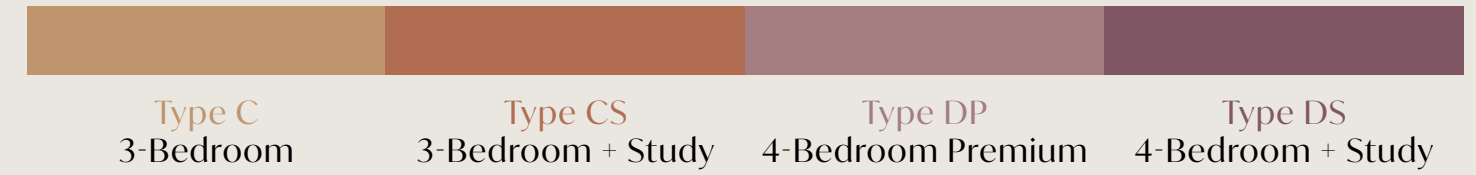
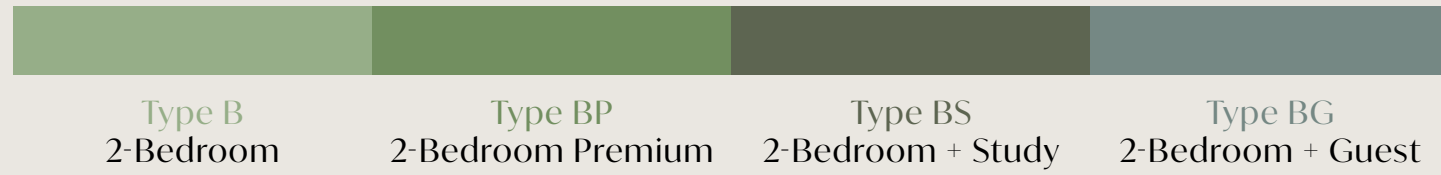
## ROOF

- |                              |                      |
|------------------------------|----------------------|
| 14 Reflexology Deck          | 20 Garden Pavilion   |
| 15 Meditation Pavilion       | 21 Swing Garden Deck |
| 16 Outdoor Fitness Area      | WT Water Tank        |
| 17 Recreational Tennis Court | B Bridge             |
| 18 Gourmet Pavilion          |                      |
| 19 Hammock Garden Deck       |                      |

## OTHERS

- |                       |                     |
|-----------------------|---------------------|
| GH Guard House        | BM Bulk Meter       |
| BC Bin Centre         | GS Genset           |
| SS Sub-station        | TR Transformer Room |
| PG1 Pedestrian Gate 1 | ..... Bridge Above  |
| PG2 Pedestrian Gate 2 |                     |
| VS Ventilation Shaft  |                     |

# Unit Distribution



BLOCK 2

UNIT FLOOR	01	02	03	04	05	06	07	08
05	BP-1(h)	B-2(h)	B-2(h)	B-1(h)	BP-1(h)	CS-2(h)	BS-2(h)	BP-1(h)
04	BP-1	B-2	B-2	B-1	BP-1	CS-2	BS-2	BP-1
03	BP-1	B-2	B-2	B-1	BP-1	CS-2	BS-2	BP-1
02	BP-1	B-2	B-2	B-1	BP-1	CS-2	BS-2	BP-1
01	BP-1(p)	B-2(p)	BG-3(p)	-	BP-1(p)	CS-2(p)	BS-2(p)	BP-1(p)

BLOCK 6

UNIT FLOOR	35	36	37	38	39	40	41	42
05	BP-1(h)	C-1(h)	C-2(h)	BP-1(h)	B-1(h)	CS-2(h)	C-2(h)	BP-1(h)
04	BP-1	C-1	C-2	BP-1	B-1	CS-2	C-2	BP-1
03	BP-1	C-1	C-2	BP-1	B-1	CS-2	C-2	BP-1
02	BP-1	C-1	C-2	BP-1	B-1	CS-2	C-2	BP-1
01	BP-1(p)	C-1(p)	C-2(p)	BP-1(p)	DS-1(p)	-	C-2(p)	BP-1(p)

BLOCK 2A

UNIT FLOOR	09	10	11	12	13	14
05	BP-1(h)	BS-2(h)	CS-1(h)	CS-1(h)	BS-2(h)	BP-1(h)
04	BP-1	BS-2	CS-1	CS-1	BS-2	BP-1
03	BP-1	BS-2	CS-1	CS-1	BS-2	BP-1
02	BP-1	BS-2	CS-1	CS-1	BS-2	BP-1
01	BP-1(p)	BS-2(p)	BG-1(p)	BG-2(p)	BS-2(p)	BP-1(p)

BLOCK 6A

UNIT FLOOR	43	44	45	46	47	48	49	50
05	BS-1(h)	C-2(h)	CS-2(h)	B-1a(h)	BP-1(h)	C-2(h)	C-2(h)	BS-1(h)
04	BS-1	C-2	CS-2	B-1a	BP-1	C-2	C-2	BS-1
03	BS-1	C-2	CS-2	B-1a	BP-1	C-2	C-2	BS-1
02	BS-1	C-2	CS-2	B-1a	BP-1	C-2	C-2	BS-1
01	BS-1(p)	C-2(p)	DS-1a(p)	-	BP-1(p)	C-2(p)	C-2(p)	BS-1(p)

BLOCK 2B

UNIT FLOOR	15	16	17	18	19	20	21	22
05	BP-1(h)	BS-2(h)	CS-2(h)	B-1a(h)	BP-1a(h)	BS-2a(h)	B-2(h)	BP-1(h)
04	BP-1	BS-2	CS-2	B-1a	BP-1a	BS-2a	B-2	BP-1
03	BP-1	BS-2	CS-2	B-1a	BP-1a	BS-2a	B-2	BP-1
02	BP-1	BS-2	CS-2	B-1a	BP-1a	BS-2a	B-2	BP-1
01	BP-1(p)	BS-2(p)	-	DS-1a(p)	BP-1a(p)	BS-2a(p)	B-2(p)	BP-1(p)

BLOCK 6B

UNIT FLOOR	51	52	53	54	55	56	57	58
05	BS-1(h)	C-2(h)	CS-2(h)	B-1(h)	BP-1(h)	C-2(h)	B-2(h)	BS-1(h)
04	BS-1	C-2	CS-2	B-1	BP-1	C-2	B-2	BS-1
03	BS-1	C-2	CS-2	B-1	BP-1	C-2	B-2	BS-1
02	BS-1	C-2	CS-2	B-1	BP-1	C-2	B-2	BS-1
01	BS-1(p)	C-2(p)	DS-1(p)	-	BP-1(p)	C-2(p)	B-2(p)	BS-1(p)

BLOCK 2C

UNIT FLOOR	23	24	25	26	27	28
05	BS-1(h)	CS-2(h)	CS-2a(h)	BP-1a(h)	DP-1(h)	DP-1(h)
04	BS-1	CS-2	CS-2a	BP-1a	DP-1	DP-1
03	BS-1	CS-2	CS-2a	BP-1a	DP-1	DP-1
02	BS-1	CS-2	CS-2a	BP-1a	DP-1	DP-1
01	BS-1(p)	CS-2(p)	CS-2a(p)	BP-1a(p)	C-3(p)	DP-1(p)

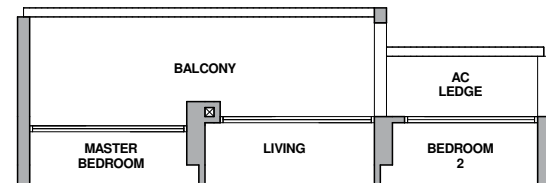
BLOCK 2D

UNIT FLOOR	29	30	31	32	33	34
05	DP-1a(h)	DP-1(h)	BP-1(h)	CS-2(h)	BS-2(h)	BS-1(h)
04	DP-1a	DP-1	BP-1	CS-2	BS-2	BS-1
03	DP-1a	DP-1	BP-1	CS-2	BS-2	BS-1
02	DP-1a	DP-1	BP-1	CS-2	BS-2	BS-1
01	DP-1a(p)	C-3(p)	BP-1(p)	CS-2(p)	BS-2(p)	BS-1(p)

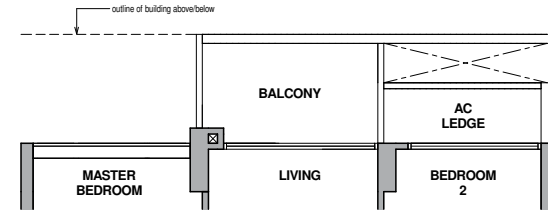
# 2-Bedroom

# 2-Bedroom

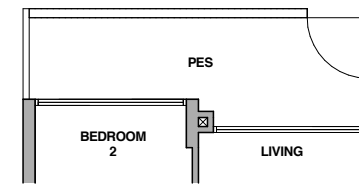
Type B-1a(h)



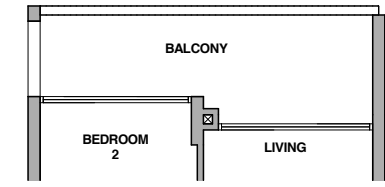
Type B-1a



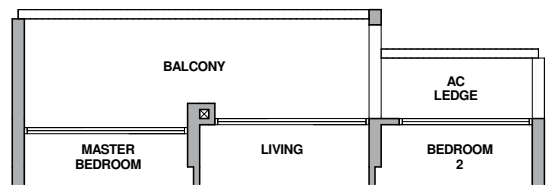
Type B-2(p)



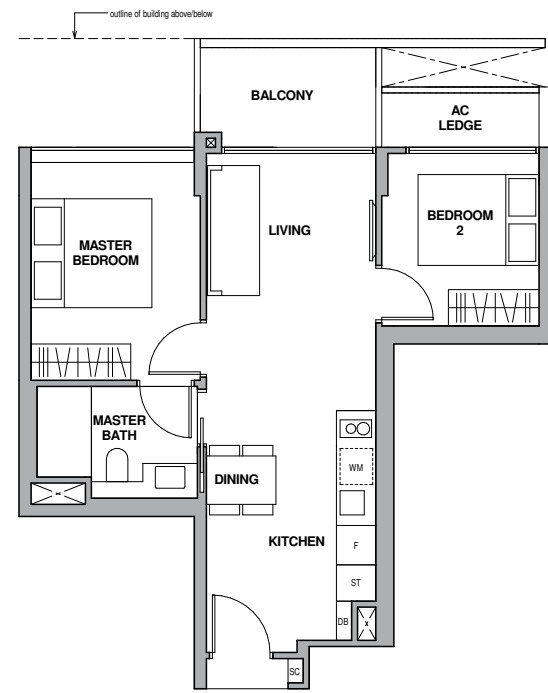
Type B-2(h)



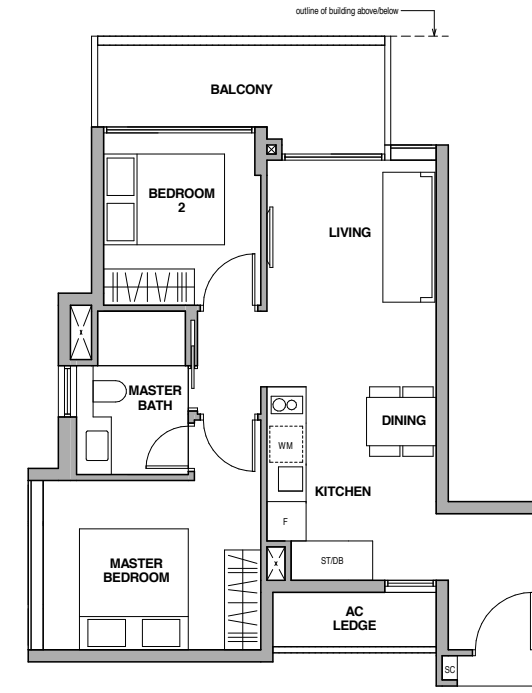
Type B-1(h)



Type B-1



Type B-2



Fridge  
Shoe Cabinet  
Washer cum Dryer

F  
SC  
WM

Storage  
Distribution Board

ST  
DB



Fridge  
Shoe Cabinet  
Washer cum Dryer

F  
SC  
WM

Storage  
Distribution Board

ST  
DB

Type B-1a(h)

64 sq m / 689 sq ft  
Inclusive of 11 sq m Balcony  
& 3 sq m AC Ledge

Block 2B  
#05-18

Block 6A  
#05-46

Type B-1a

59 sq m / 635 sq ft  
Inclusive of 6 sq m Balcony  
& 3 sq m AC Ledge

Block 2B  
#02-18 to #04-18

Block 6A  
#02-46 to #04-46

Type B-1(h)

64 sq m / 689 sq ft  
Inclusive of 11 sq m Balcony  
& 3 sq m AC Ledge

Block 2  
#05-04

Block 6  
#05-39 \*

Block 6B  
#05-54

Type B-1

59 sq m / 635 sq ft  
Inclusive of 6 sq m Balcony  
& 3 sq m AC Ledge

Block 2  
#02-04 to #04-04

Block 6  
#02-39 to #04-39 \*

Block 6B  
#02-54 to #04-54



Key plan is not drawn to scale

Type B-2(p)

67 sq m / 721 sq ft  
Inclusive of 10 sq m PES  
& 3 sq m AC Ledge

Block 2  
#01-02 \*

Block 2B  
#01-21

Block 6B  
#01-57

Type B-2(h)

67 sq m / 721 sq ft  
Inclusive of 10 sq m Balcony  
& 3 sq m AC Ledge

Block 2  
#05-02 \*

Block 2B  
#05-21

Block 6B  
#05-57

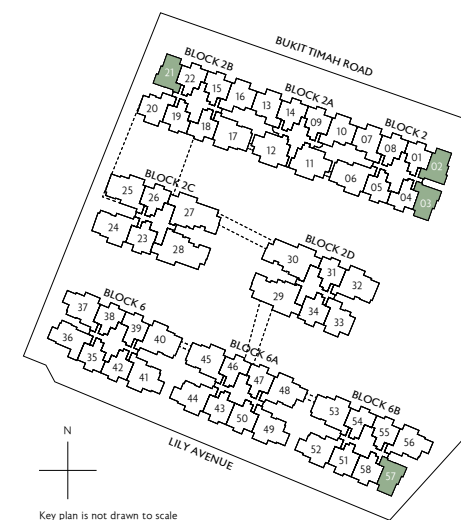
Type B-2

66 sq m / 710 sq ft  
Inclusive of 9 sq m Balcony  
& 3 sq m AC Ledge

Block 2  
#02-02 to #04-02 \*

Block 2B  
#02-21 to #04-21

Block 6B  
#02-57 to #04-57



Key plan is not drawn to scale

\* Mirror Image

All plans are subject to change as may be required or approved by the relevant authorities. All floor areas are approximate measurements only and are subject to final survey. The balcony shall not be enclosed except with the approved balcony screen. For an illustration of the approved balcony screen, please refer to the diagram annexed hereto as "Annexure 1".

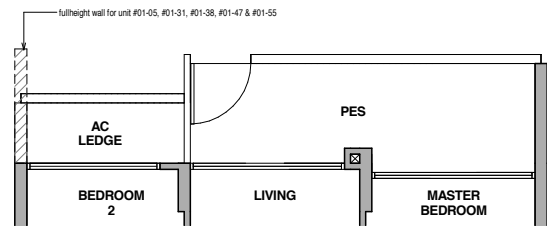
\* Mirror Image

All plans are subject to change as may be required or approved by the relevant authorities. All floor areas are approximate measurements only and are subject to final survey. The balcony shall not be enclosed except with the approved balcony screen. For an illustration of the approved balcony screen, please refer to the diagram annexed hereto as "Annexure 1".

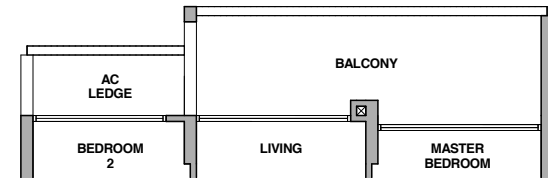
# 2-Bedroom Premium

# 2-Bedroom Premium

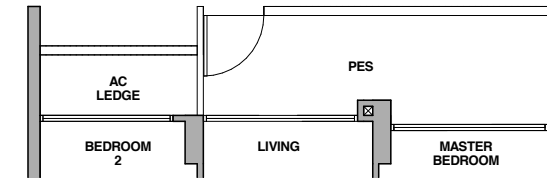
Type BP-1(p)



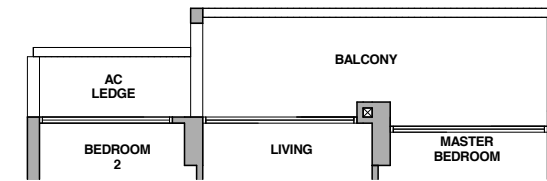
Type BP-1(h)



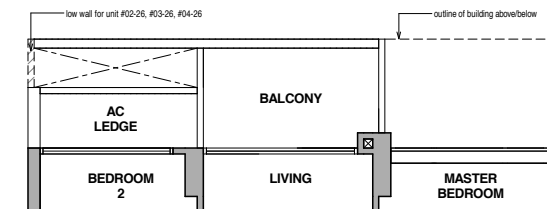
Type BP-1a(p)



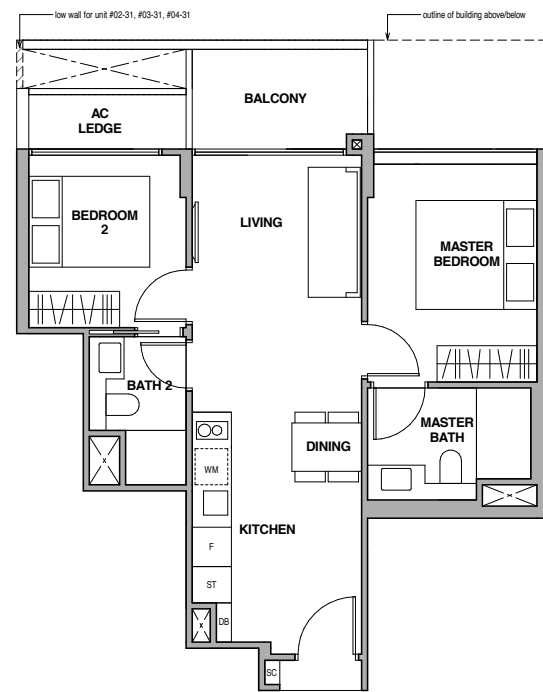
Type BP-1a(h)



Type BP-1a



Type BP-1



Fridge  
Shoe Cabinet  
Washer cum Dryer

F  
SC  
WM

Storage  
Distribution Board

ST  
DB



Fridge  
Shoe Cabinet  
Washer cum Dryer

F  
SC  
WM

Storage  
Distribution Board

ST  
DB

Type BP-1(p)

67 sq m / 721 sq ft  
Inclusive of 11 sq m PES  
& 3 sq m AC Ledge

- Block 2  
#01-01  
#01-05  
#01-08 \*
- Block 6  
#01-35  
#01-38 \*  
#01-42 \*
- Block 2A  
#01-09  
#01-14 \*
- Block 2B  
#01-15  
#01-22 \*
- Block 2D  
#01-31

Type BP-1(h)

67 sq m / 721 sq ft  
Inclusive of 11 sq m Balcony  
& 3 sq m AC Ledge

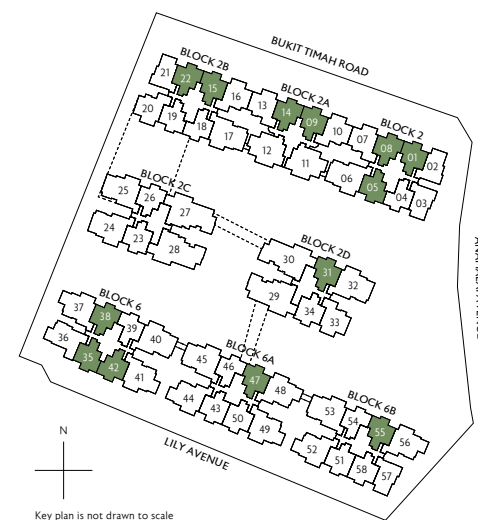
- Block 2  
#05-01  
#05-05  
#05-08 \*
- Block 6  
#05-35  
#05-38 \*  
#05-42 \*
- Block 2A  
#02-09  
#05-14 \*
- Block 2B  
#05-15  
#05-22 \*
- Block 2D  
#05-31

Type BP-1

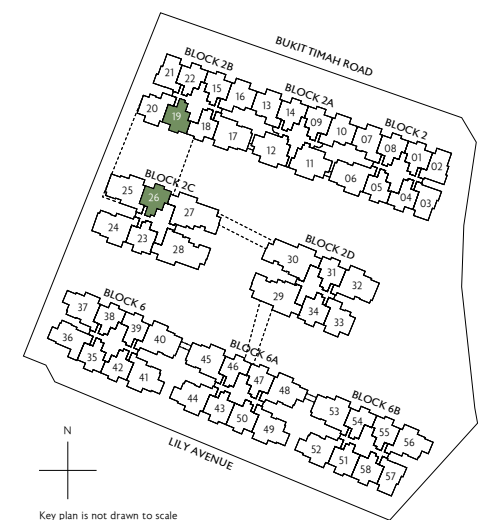
62 sq m / 667 sq ft  
Inclusive of 6 sq m Balcony  
& 3 sq m AC Ledge

- Block 2  
#02-01 to #04-01  
#02-05 to #04-05  
#02-08 to #04-08 \*
- Block 2A  
#02-09 to #04-09  
#02-14 to #04-14 \*
- Block 2B  
#02-15 to #04-15  
#02-22 to #04-22 \*
- Block 2D  
#02-31 to #04-31

- Block 6  
#02-35 to #04-35  
#02-38 to #04-38 \*  
#02-42 to #04-42 \*
- Block 6A  
#02-47 to #04-47
- Block 6B  
#02-55 to #04-55



Key plan is not drawn to scale



Key plan is not drawn to scale

Type BP-1a(p)

67 sq m / 721 sq ft  
Inclusive of 11 sq m PES  
& 3 sq m AC Ledge

- Block 2B  
#01-19
- Block 2C  
#01-26 \*

Type BP-1a(h)

67 sq m / 721 sq ft  
Inclusive of 11 sq m Balcony  
& 3 sq m AC Ledge

- Block 2B  
#05-19
- Block 2C  
#05-26 \*

Type BP-1a

62 sq m / 667 sq ft  
Inclusive of 6 sq m Balcony  
& 3 sq m AC Ledge

- Block 2B  
#02-19 to #04-19
- Block 2C  
#02-26 to #04-26 \*

\* Mirror Image

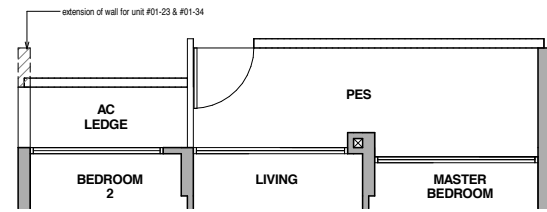
\* Mirror Image

All plans are subject to change as may be required or approved by the relevant authorities. All floor areas are approximate measurements only and are subject to final survey. The balcony shall not be enclosed except with the approved balcony screen. For an illustration of the approved balcony screen, please refer to the diagram annexed hereto as "Annexure 1".

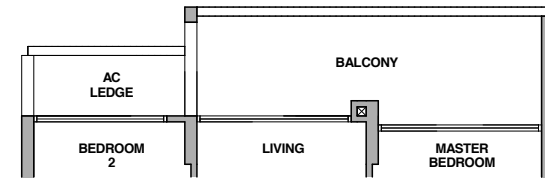
All plans are subject to change as may be required or approved by the relevant authorities. All floor areas are approximate measurements only and are subject to final survey. The balcony shall not be enclosed except with the approved balcony screen. For an illustration of the approved balcony screen, please refer to the diagram annexed hereto as "Annexure 1".

# 2-Bedroom + Study

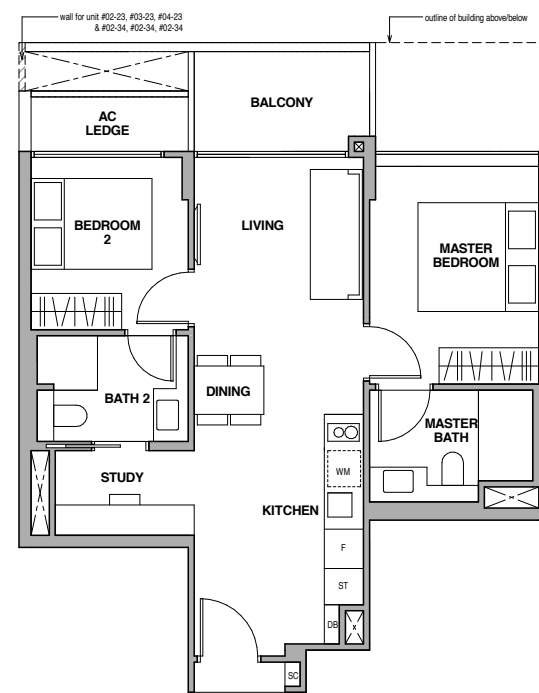
Type BS-1(p)



Type BS-1(h)



Type BS-1



Fridge  
Shoe Cabinet  
Washer cum Dryer

F  
SC  
WM

Storage  
Distribution Board

ST  
DB



Type BS-1(p)

72 sq m / 775 sq ft  
Inclusive of 11 sq m PES  
& 3 sq m AC Ledge

Block 2C  
#01-23

Block 2D  
#01-34 \*

Block 6A  
#01-43  
#01-50 \*

Block 6B  
#01-51  
#01-58 \*

Type BS-1(h)

72 sq m / 775 sq ft  
Inclusive of 11 sq m Balcony  
& 3 sq m AC Ledge

Block 2C  
#05-23

Block 2D  
#05-34 \*

Block 6A  
#05-43  
#05-50 \*

Block 6B  
#05-51  
#05-58 \*

Type BS-1

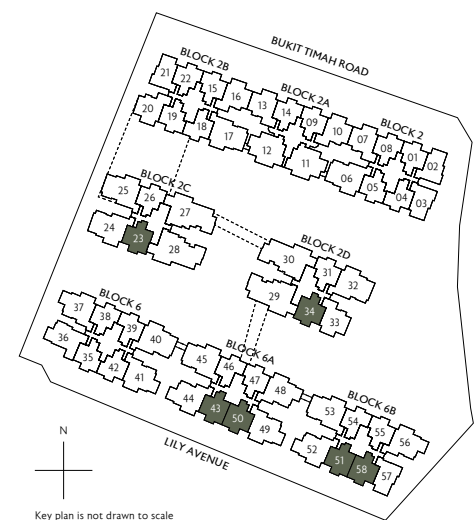
67 sq m / 721 sq ft  
Inclusive of 6 sq m Balcony  
& 3 sq m AC Ledge

Block 2C  
#02-23 to #04-23

Block 2D  
#02-34 to #04-34 \*

Block 6A  
#02-43 to #04-43  
#02-50 to #04-50 \*

Block 6B  
#02-51 to #04-51  
#02-58 to #04-58 \*



Key plan is not drawn to scale

\* Mirror Image

All plans are subject to change as may be required or approved by the relevant authorities. All floor areas are approximate measurements only and are subject to final survey. The balcony shall not be enclosed except with the approved balcony screen. For an illustration of the approved balcony screen, please refer to the diagram annexed hereto as "Annexure 1".

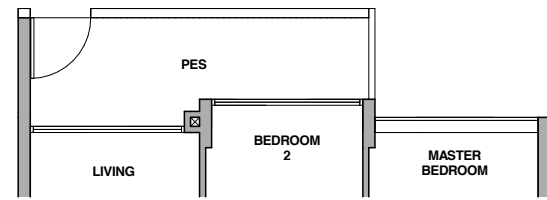


For illustration purposes only

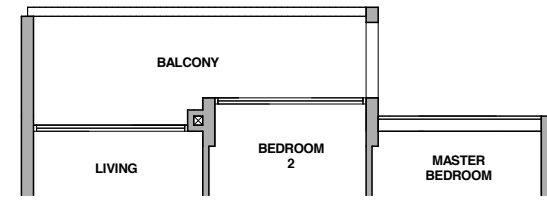
# 2-Bedroom + Study

# 2-Bedroom + Study

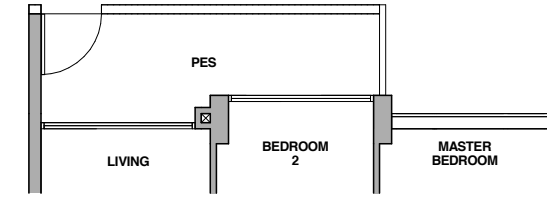
Type BS-2(p)



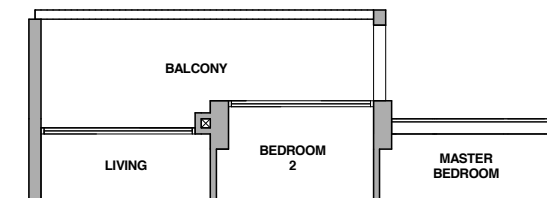
Type BS-2(h)



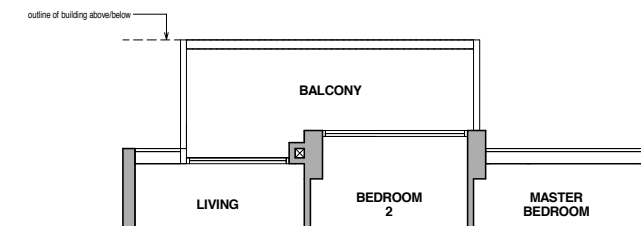
Type BS-2a(p)



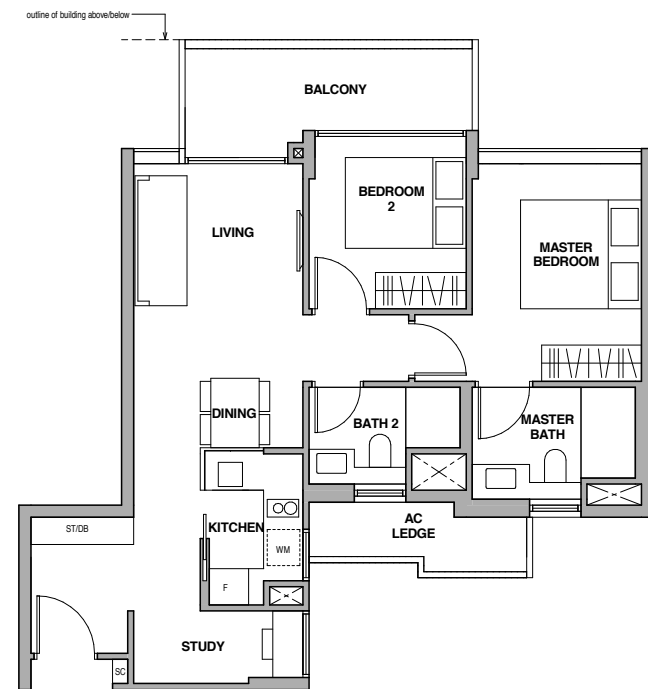
Type BS-2a(h)



Type BS-2a



Type BS-2



Fridge  
Shoe Cabinet  
Washer cum Dryer

F  
SC  
WM

Storage  
Distribution Board

ST  
DB



Fridge  
Shoe Cabinet  
Washer cum Dryer

F  
SC  
WM

Storage  
Distribution Board

ST  
DB

Type BS-2(p)

77 sq m / 829 sq ft  
Inclusive of 10 sq m PES  
& 4 sq m AC Ledge

Block 2  
#01-07 \*

Block 2A  
#01-10  
#01-13 \*

Block 2B  
#01-16

Block 2D  
#01-33 \*

Type BS-2(h)

77 sq m / 829 sq ft  
Inclusive of 10 sq m Balcony  
& 4 sq m AC Ledge

Block 2  
#05-07 \*

Block 2A  
#05-10  
#05-13 \*

Block 2B  
#05-16

Block 2D  
#05-33 \*

Type BS-2

76 sq m / 818 sq ft  
Inclusive of 9 sq m Balcony  
& 4 sq m AC Ledge

Block 2  
#02-07 to #04-07 \*

Block 2A  
#02-10 to #04-10  
#02-13 to #04-13 \*

Block 2B  
#02-16 to #04-16

Block 2D  
#02-33 to #04-33 \*



Key plan is not drawn to scale

Type BS-2a(p)

77 sq m / 829 sq ft  
Inclusive of 10 sq m PES  
& 4 sq m AC Ledge

Block 2B  
#01-20

Type BS-2a(h)

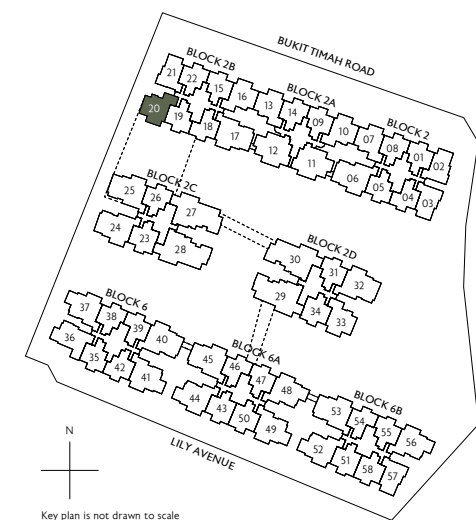
77 sq m / 829 sq ft  
Inclusive of 10 sq m Balcony  
& 4 sq m AC Ledge

Block 2B  
#05-20

Type BS-2a

76 sq m / 818 sq ft  
Inclusive of 9 sq m Balcony  
& 4 sq m AC Ledge

Block 2B  
#02-20 to #04-20



Key plan is not drawn to scale

\* Mirror Image

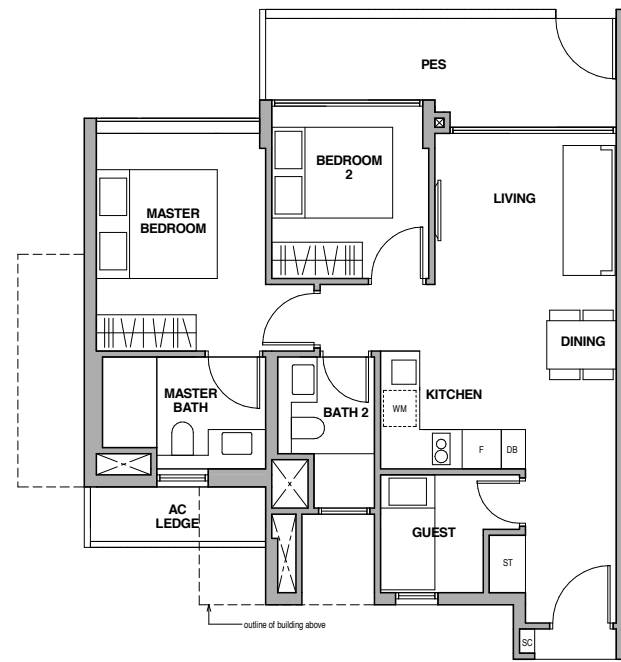
All plans are subject to change as may be required or approved by the relevant authorities. All floor areas are approximate measurements only and are subject to final survey. The balcony shall not be enclosed except with the approved balcony screen. For an illustration of the approved balcony screen, please refer to the diagram annexed hereto as "Annexure 1".

All plans are subject to change as may be required or approved by the relevant authorities. All floor areas are approximate measurements only and are subject to final survey. The balcony shall not be enclosed except with the approved balcony screen. For an illustration of the approved balcony screen, please refer to the diagram annexed hereto as "Annexure 1".

# 2-Bedroom + Guest

# 2-Bedroom + Guest

Type BG-1(p)



Fridge  
Shoe Cabinet  
Washer cum Dryer

F  
SC  
WM

Storage  
Distribution Board

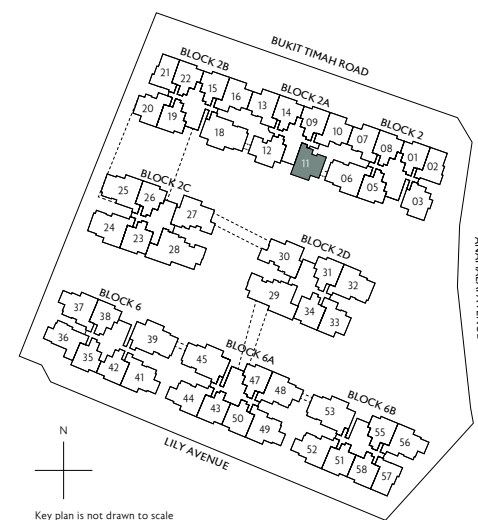
ST  
DB



Type BG-1(p)

76 sq m / 818 sq ft  
Inclusive of 11 sq m PES  
& 3 sq m AC Ledge

Block 2A  
#01-11

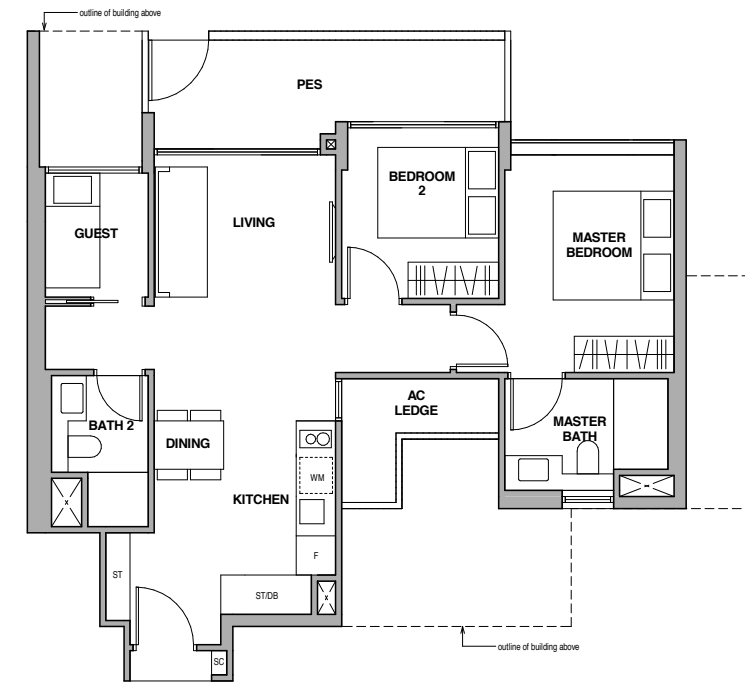


N  
Key plan is not drawn to scale

\* Mirror Image

All plans are subject to change as may be required or approved by the relevant authorities. All floor areas are approximate measurements only and are subject to final survey. The balcony shall not be enclosed except with the approved balcony screen. For an illustration of the approved balcony screen, please refer to the diagram annexed hereto as "Annexure 1".

Type BG-2(p)



Fridge  
Shoe Cabinet  
Washer cum Dryer

F  
SC  
WM

Storage  
Distribution Board

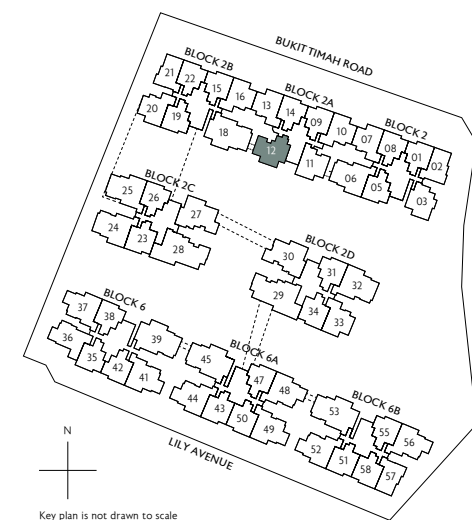
ST  
DB



Type BG-2(p)

80 sq m / 861 sq ft  
Inclusive of 11 sq m PES  
& 4 sq m AC Ledge

Block 2A  
#01-12



N  
Key plan is not drawn to scale

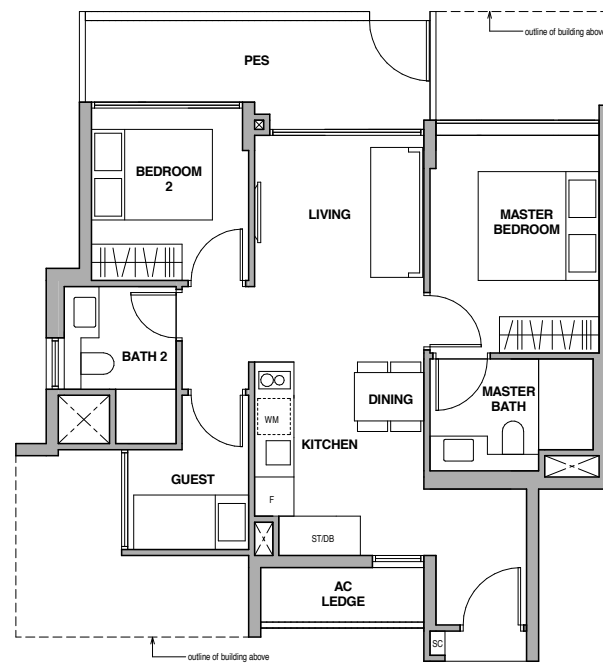
All plans are subject to change as may be required or approved by the relevant authorities. All floor areas are approximate measurements only and are subject to final survey. The balcony shall not be enclosed except with the approved balcony screen. For an illustration of the approved balcony screen, please refer to the diagram annexed hereto as "Annexure 1".



# 2-Bedroom + Guest

# 3-Bedroom

Type BG-3(p)



Fridge  
Shoe Cabinet  
Washer cum Dryer

F  
SC  
WM

Storage  
Distribution Board

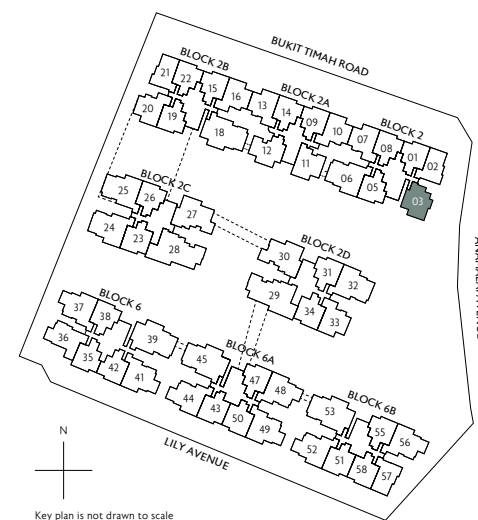
ST  
DB



Type BG-3(p)

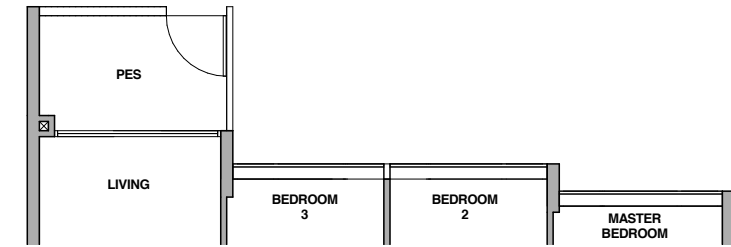
75 sq m / 807 sq ft  
Inclusive of 10 sq m PES  
& 3 sq m AC Ledge

Block 2  
#01-03

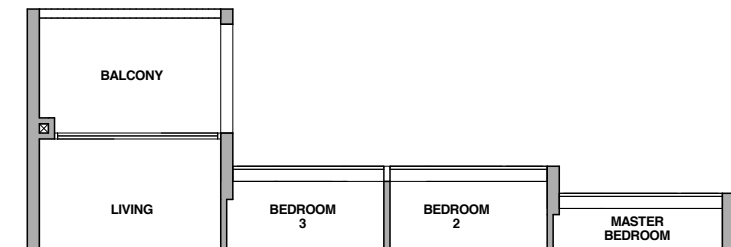


Key plan is not drawn to scale

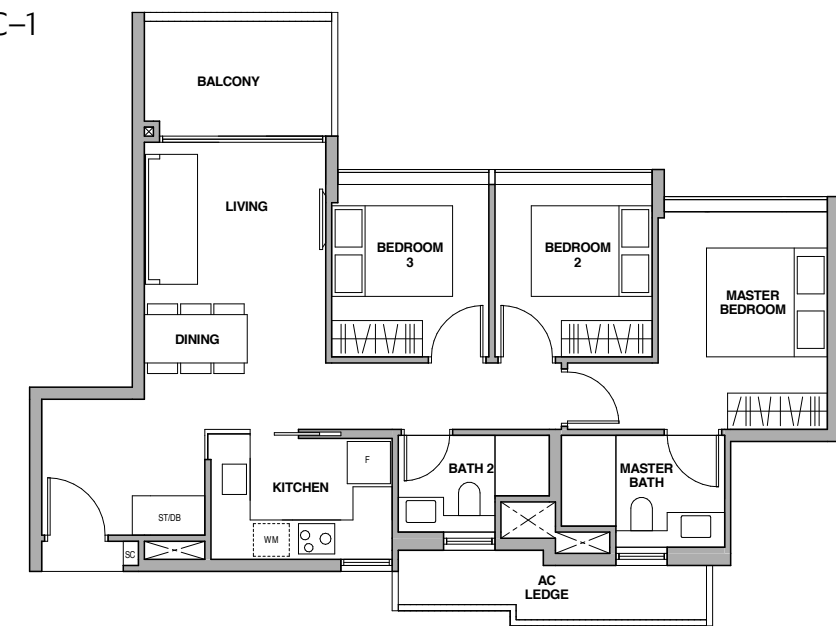
Type C-1(p)



Type C-1(h)



Type C-1



Fridge  
Shoe Cabinet  
Washer cum Dryer

F  
SC  
WM

Storage  
Distribution Board

ST  
DB



Type C-1(p)

86 sq m / 926 sq ft  
Inclusive of 6 sq m PES  
& 6 sq m AC Ledge

Block 6  
#01-36

Type C-1(h)

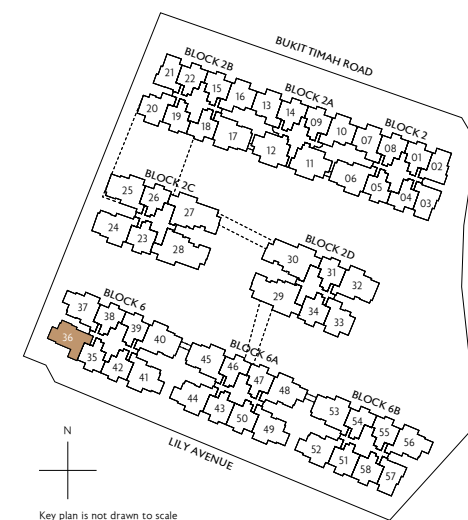
86 sq m / 926 sq ft  
Inclusive of 6 sq m Balcony  
& 6 sq m AC Ledge

Block 6  
#05-36

Type C-1

86 sq m / 926 sq ft  
Inclusive of 6 sq m Balcony  
& 6 sq m AC Ledge

Block 6  
#02-36 to #04-36

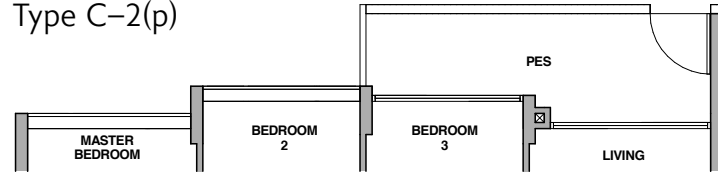


Key plan is not drawn to scale

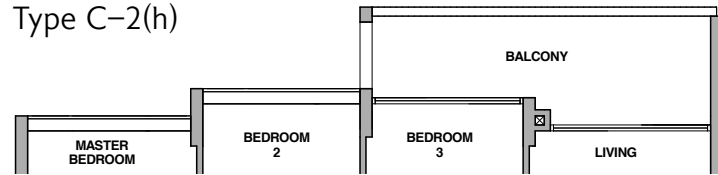
# 3-Bedroom

# 3-Bedroom

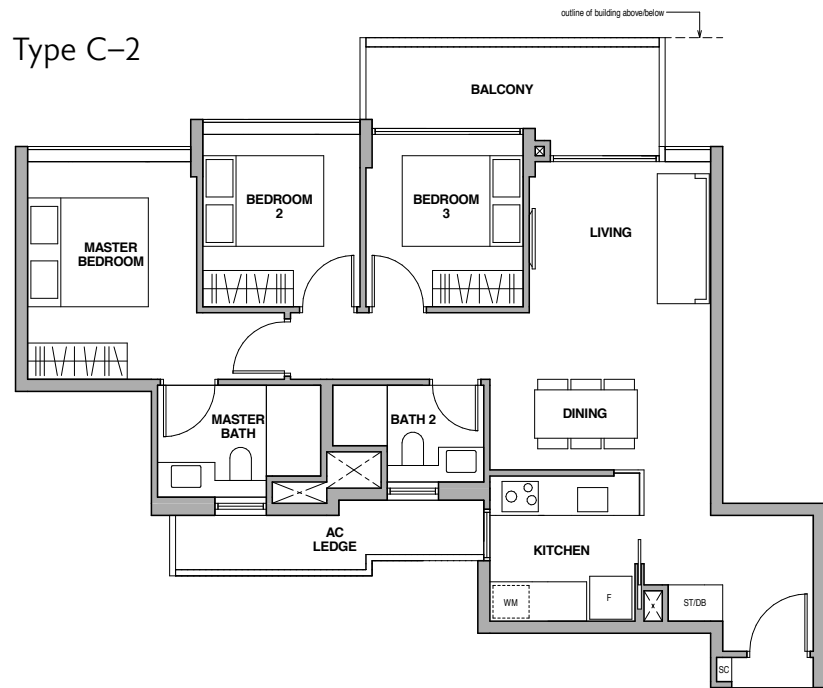
Type C-2(p)



Type C-2(h)



Type C-2



Fridge  
Shoe Cabinet  
Washer cum Dryer

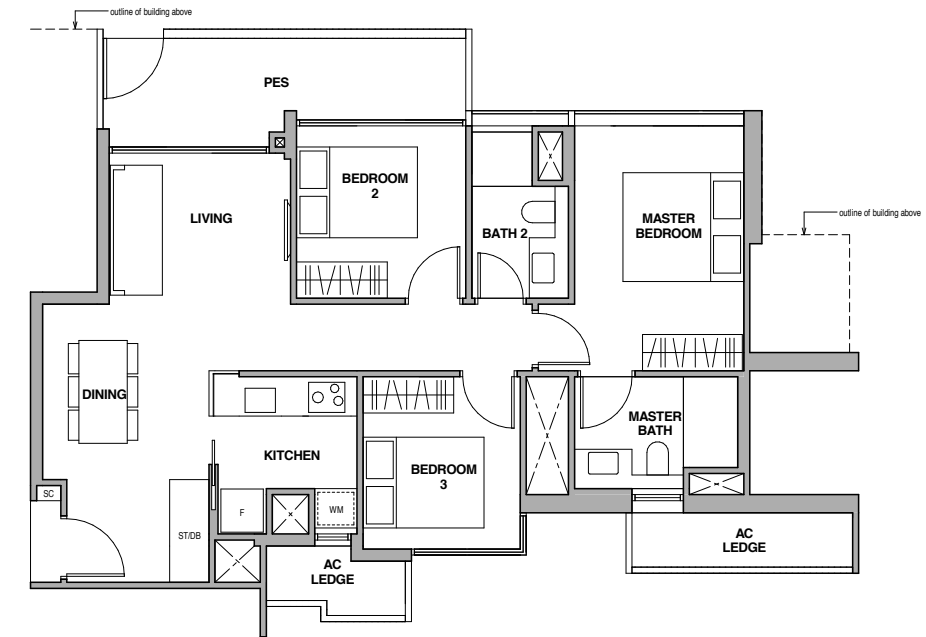
F  
SC  
WM

Storage  
Distribution Board

ST  
DB



Type C-3(p)



Fridge  
Shoe Cabinet  
Washer cum Dryer

F  
SC  
WM

Storage  
Distribution Board

ST  
DB



Type C-2(p)

92 sq m / 990 sq ft  
Inclusive of 10 sq m PES  
& 6 sq m AC Ledge

Block 6  
#01-37  
#01-41

Block 6A  
#01-44 \*  
#01-48 \*  
#01-49

Block 6B  
#01-52 \*  
#01-56 \*

Type C-2(h)

92 sq m / 990 sq ft  
Inclusive of 10 sq m Balcony  
& 6 sq m AC Ledge

Block 6  
#05-37  
#05-41

Block 6A  
#05-44 \*  
#05-48 \*  
#05-49

Block 6B  
#05-52 \*  
#05-56 \*

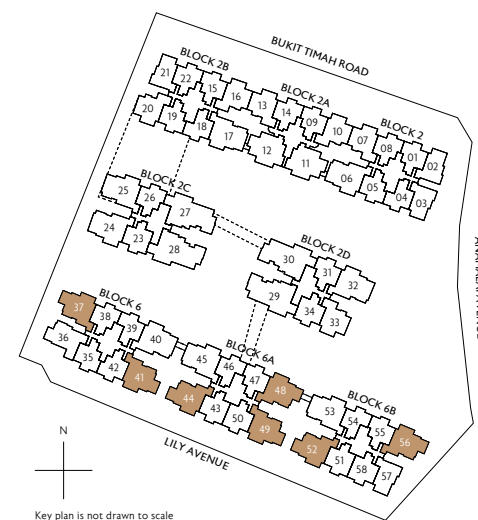
Type C-2

91 sq m / 980 sq ft  
Inclusive of 9 sq m Balcony  
& 6 sq m AC Ledge

Block 6  
#02-37 to #04-37  
#02-41 to #04-41

Block 6A  
#02-44 to #04-44 \*  
#02-48 to #04-48 \*  
#02-49 to #04-49

Block 6B  
#02-52 to #04-52 \*  
#02-56 to #04-56 \*



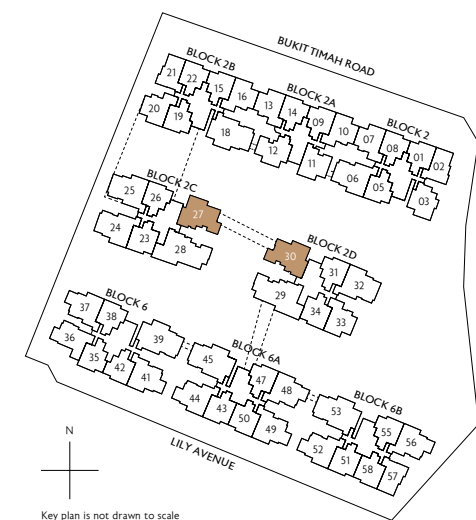
Key plan is not drawn to scale

Type C-3(p)

92 sq m / 990 sq ft  
Inclusive of 10 sq m PES  
& 7 sq m AC Ledge

Block 2C  
#01-27

Block 2D  
#01-30 \*



Key plan is not drawn to scale

\* Mirror Image

\* Mirror Image

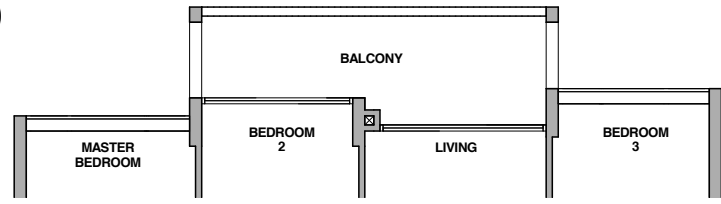
All plans are subject to change as may be required or approved by the relevant authorities. All floor areas are approximate measurements only and are subject to final survey. The balcony shall not be enclosed except with the approved balcony screen. For an illustration of the approved balcony screen, please refer to the diagram annexed hereto as "Annexure 1".

All plans are subject to change as may be required or approved by the relevant authorities. All floor areas are approximate measurements only and are subject to final survey. The balcony shall not be enclosed except with the approved balcony screen. For an illustration of the approved balcony screen, please refer to the diagram annexed hereto as "Annexure 1".

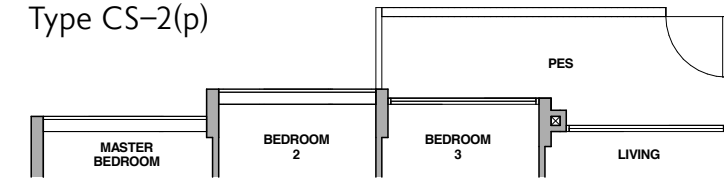
# 3-Bedroom + Study

# 3-Bedroom + Study

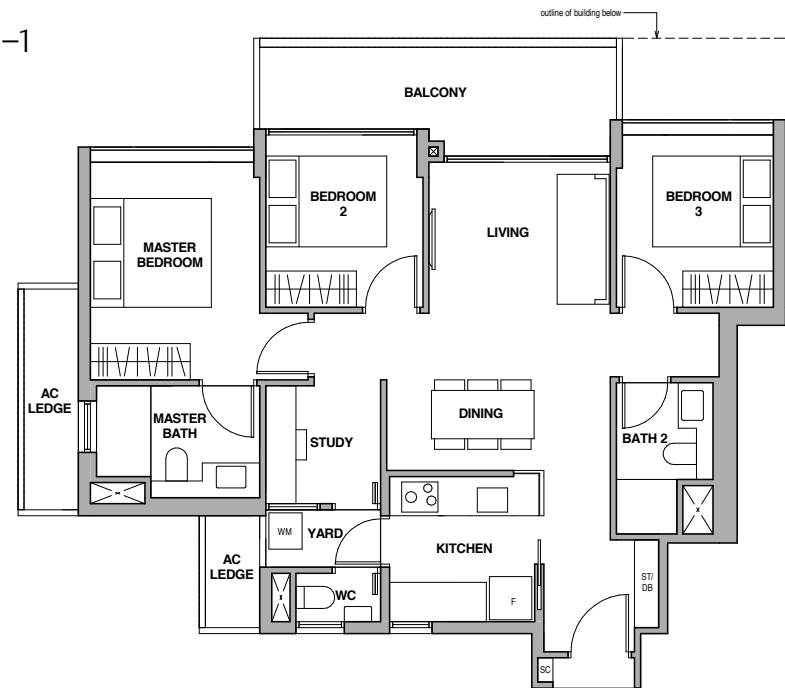
Type CS-1(h)



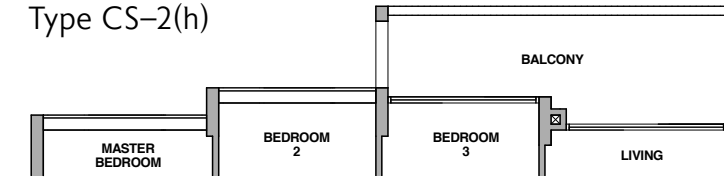
Type CS-2(p)



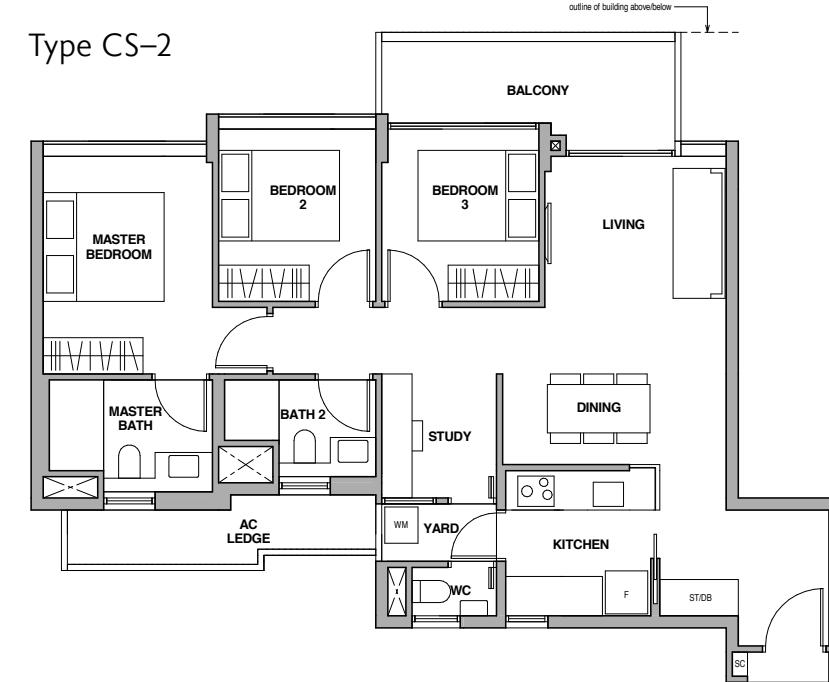
Type CS-1



Type CS-2(h)



Type CS-2



Fridge  
Shoe Cabinet  
Washer cum Dryer

F  
SC  
WM

Storage  
Distribution Board

ST  
DB

0 1 3 5M

Fridge  
Shoe Cabinet  
Washer cum Dryer

F  
SC  
WM

Storage  
Distribution Board

ST  
DB

0 1 3 5M

Type CS-1(h)

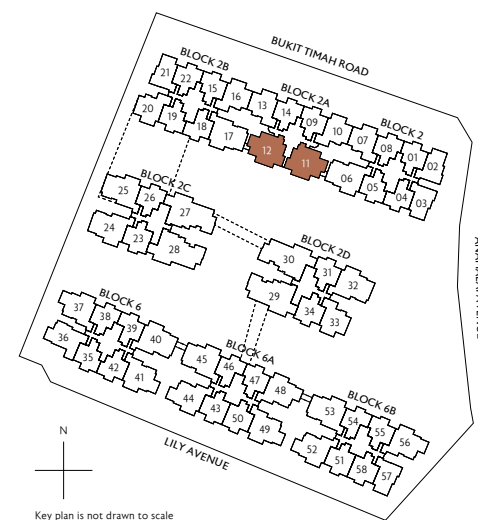
97 sq m / 1044 sq ft  
Inclusive of 10 sq m Balcony & 6 sq m AC Ledge

Block 2A  
#05-11  
#05-12 \*

Type CS-1

97 sq m / 1044 sq ft  
Inclusive of 10 sq m Balcony & 6 sq m AC Ledge

Block 2A  
#02-11 to #04-11  
#02-12 to #04-12 \*



Type CS-2(p)

100 sq m / 1076 sq ft  
Inclusive of 10 sq m PES & 6 sq m AC Ledge

Block 2  
#01-06 \*  
Block 2C  
#01-24 \*  
Block 2D  
#01-32 \*

Type CS-2(h)

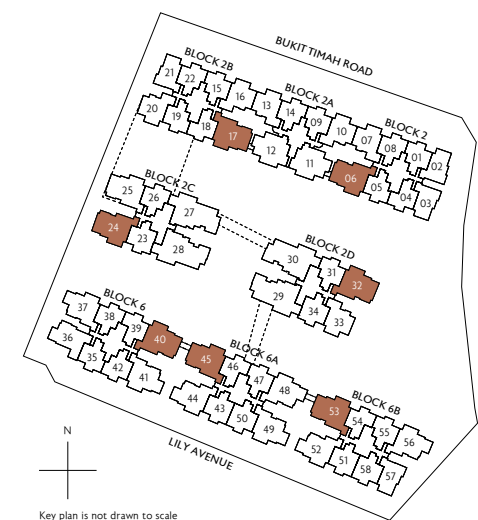
100 sq m / 1076 sq ft  
Inclusive of 10 sq m Balcony & 6 sq m AC Ledge

Block 2  
#05-06 \*  
Block 2B  
#05-17  
Block 2C  
#05-24 \*  
Block 2D  
#05-32 \*

Type CS-2

99 sq m / 1066 sq ft  
Inclusive of 9 sq m Balcony & 6 sq m AC Ledge

Block 2  
#02-06 to #04-06 \*  
Block 2B  
#02-17 to #04-17  
Block 2C  
#02-24 to #04-24 \*  
Block 2D  
#02-32 to #04-32 \*



\* Mirror Image

All plans are subject to change as may be required or approved by the relevant authorities. All floor areas are approximate measurements only and are subject to final survey. The balcony shall not be enclosed except with the approved balcony screen. For an illustration of the approved balcony screen, please refer to the diagram annexed hereto as "Annexure 1".

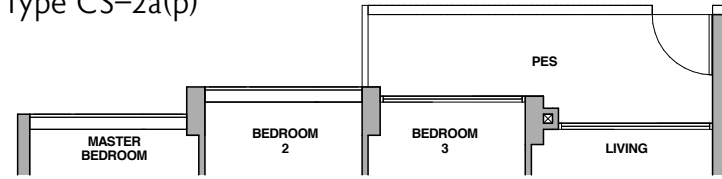
\* Mirror Image

All plans are subject to change as may be required or approved by the relevant authorities. All floor areas are approximate measurements only and are subject to final survey. The balcony shall not be enclosed except with the approved balcony screen. For an illustration of the approved balcony screen, please refer to the diagram annexed hereto as "Annexure 1".

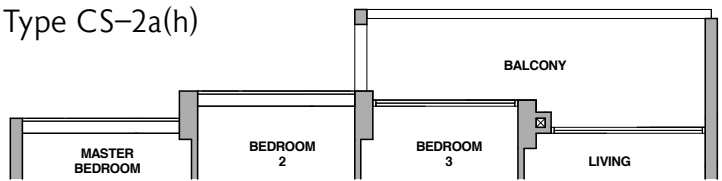
# 3-Bedroom + Study

# 4-Bedroom Premium

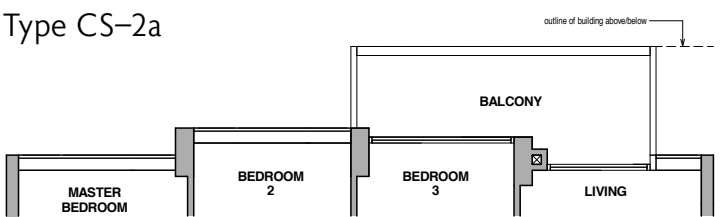
Type CS-2a(p)



Type CS-2a(h)



Type CS-2a



Fridge  
Shoe Cabinet  
Washer cum Dryer

F  
SC  
WM

Storage  
Distribution Board

ST  
DB



Type CS-2a(p)

100 sq m / 1076 sq ft  
Inclusive of 10 sq m PES  
& 6 sq m AC Ledge

Block 2C  
#01-25

Type CS-2a(h)

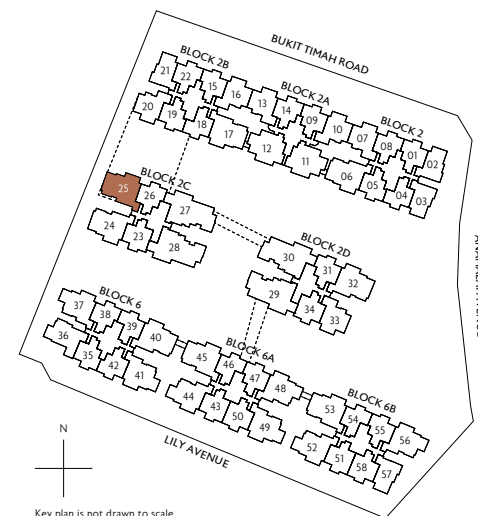
100 sq m / 1076 sq ft  
Inclusive of 10 sq m Balcony  
& 6 sq m AC Ledge

Block 2C  
#05-25

Type CS-2a

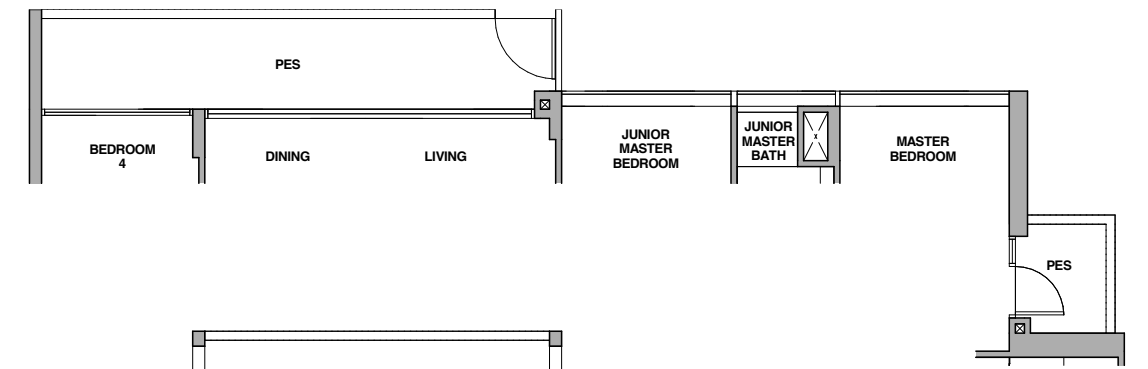
99 sq m / 1066 sq ft  
Inclusive of 9 sq m Balcony  
& 6 sq m AC Ledge

Block 2C  
#02-25 to #04-25

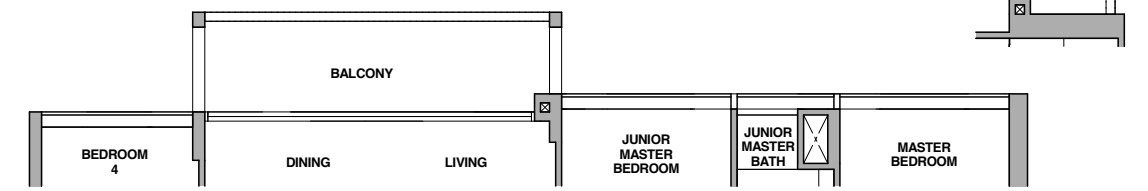


Key plan is not drawn to scale

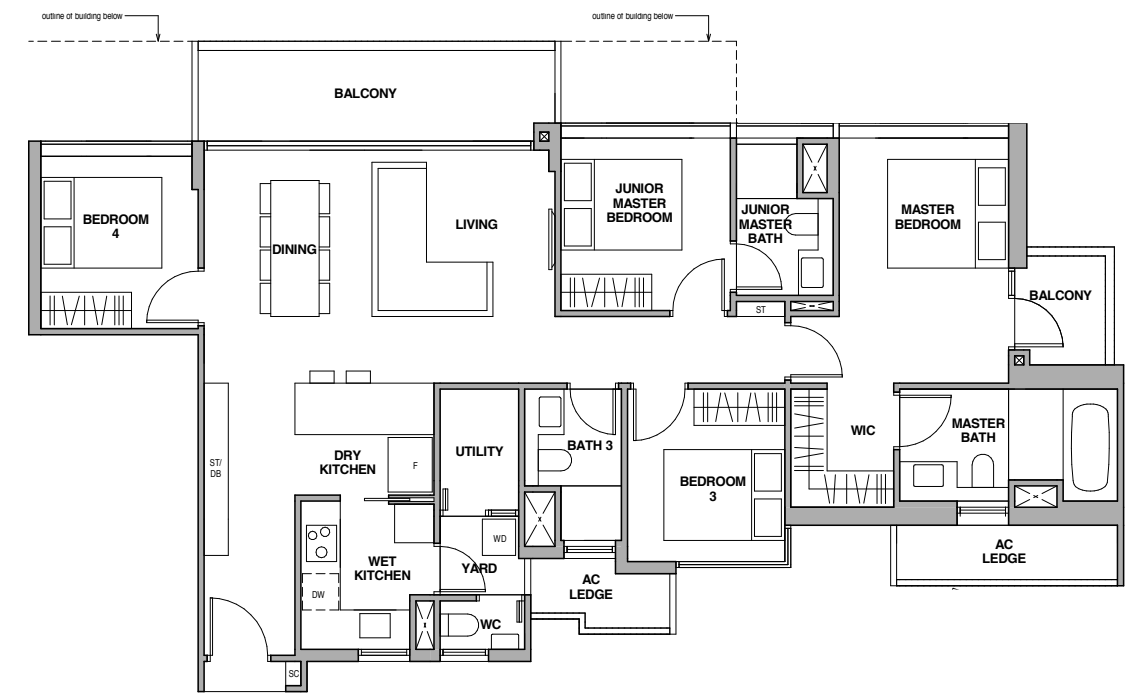
Type DP-1(p)



Type DP-1(h)



Type DP-1



Fridge  
Shoe Cabinet  
Washer and Dryer  
Walk-in Closet

F  
SC  
WD  
WIC

Storage  
Distribution Board  
Dishwasher

ST  
DB  
DW



Type DP-1(p)

137 sq m / 1475 sq ft  
Inclusive of 17 sq m PES  
& 7 sq m AC Ledge

Block 2C  
#01-28 \*

Type DP-1(h)

133 sq m / 1432 sq ft  
Inclusive of 13 sq m Balcony  
& 7 sq m AC Ledge

Block 2C  
#05-27  
#05-28 \*

Block 2D  
#05-30 \*

Type DP-1

133 sq m / 1432 sq ft  
Inclusive of 13 sq m Balcony  
& 7 sq m AC Ledge

Block 2C  
#02-27 to #04-27  
#02-28 to #04-28 \*

Block 2D  
#02-30 to #04-30 \*



Key plan is not drawn to scale

\* Mirror Image

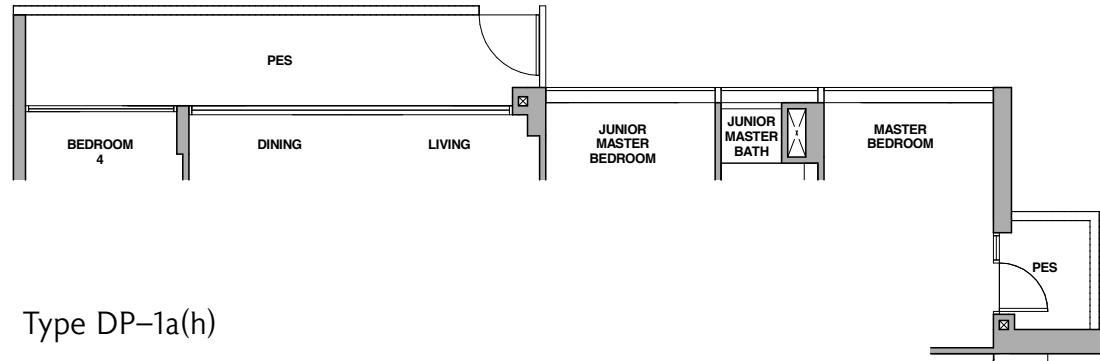
All plans are subject to change as may be required or approved by the relevant authorities. All floor areas are approximate measurements only and are subject to final survey. The balcony shall not be enclosed except with the approved balcony screen. For an illustration of the approved balcony screen, please refer to the diagram annexed hereto as "Annexure 1".

All plans are subject to change as may be required or approved by the relevant authorities. All floor areas are approximate measurements only and are subject to final survey. The balcony shall not be enclosed except with the approved balcony screen. For an illustration of the approved balcony screen, please refer to the diagram annexed hereto as "Annexure 1".

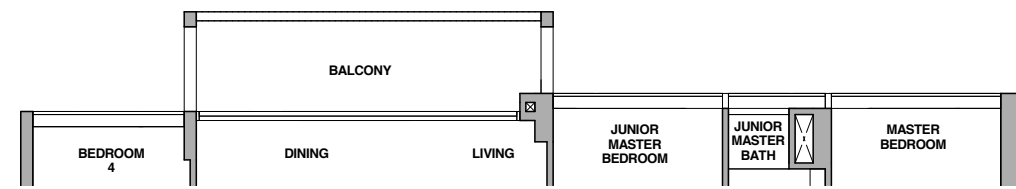
# 4-Bedroom Premium

# 4-Bedroom + Study

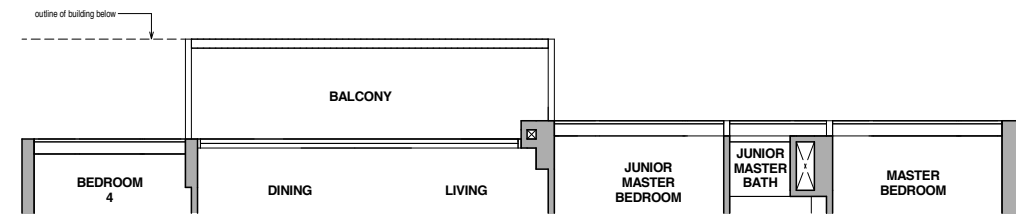
Type DP-1a(p)



Type DP-1a(h)



Type DP-1a



Fridge SC Storage ST  
 Shoe Cabinet WD Distribution Board DB  
 Washer and Dryer WIC Dishwasher DW

0 1 3 5M

Type DP-1a(p)

137 sq m / 1475 sq ft  
 Inclusive of 17 sq m PES  
 & 7 sq m AC Ledge

Block 2D  
 #01-29

Type DP-1a(h)

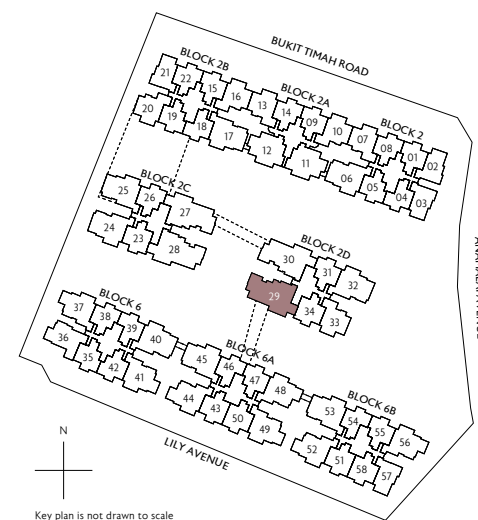
133 sq m / 1432 sq ft  
 Inclusive of 13 sq m Balcony  
 & 7 sq m AC Ledge

Block 2D  
 #05-29

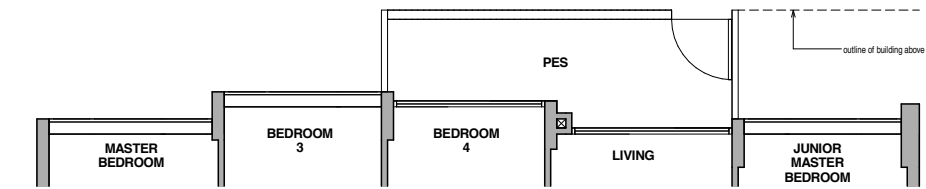
Type DP-1a

133 sq m / 1432 sq ft  
 Inclusive of 13 sq m Balcony  
 & 7 sq m AC Ledge

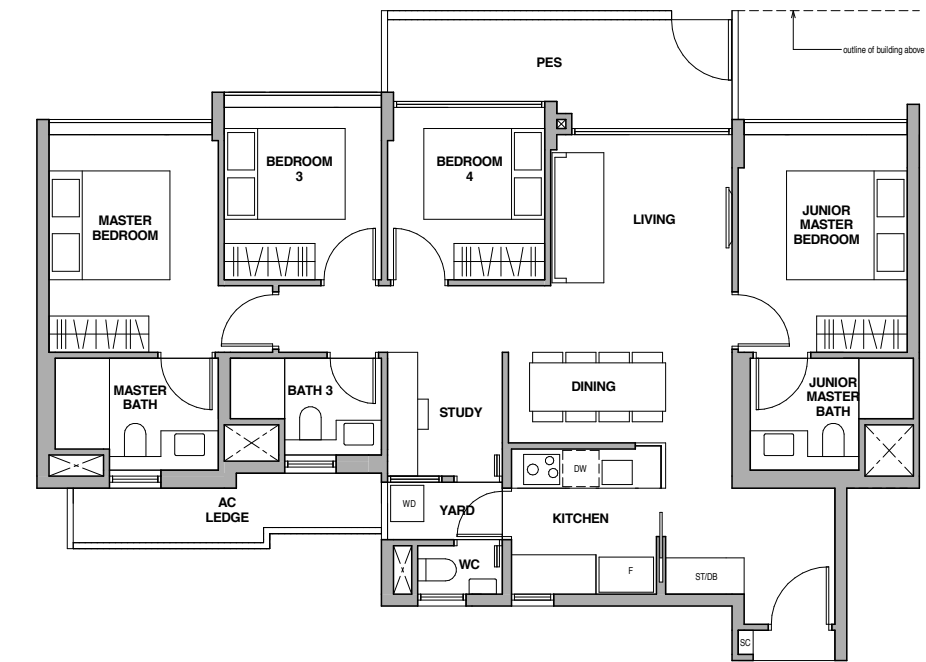
Block 2D  
 #02-29 to #04-29



Type DS-1a(p)



Type DS-1(p)



Fridge SC Storage ST  
 Shoe Cabinet WD Distribution Board DB  
 Washer and Dryer WIC Dishwasher DW

0 1 3 5M

Type DS-1a(p)

117 sq m / 1259 sq ft  
 Inclusive of 10 sq m PES  
 & 6 sq m AC Ledge

Block 2B  
 #01-18  
 Block 6A  
 #01-45

Type DS-1(p)

117 sq m / 1259 sq ft  
 Inclusive of 10 sq m PES  
 & 6 sq m AC Ledge

Block 6  
 #01-39 \*  
 Block 6B  
 #01-53



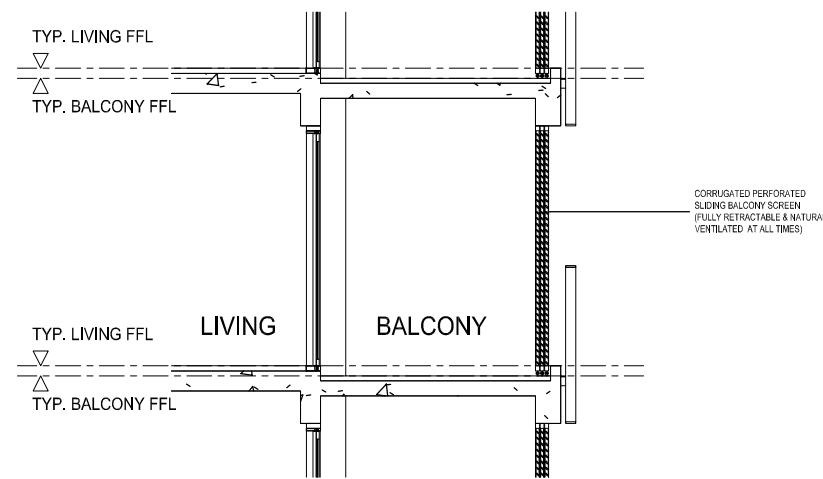
\* Mirror Image

All plans are subject to change as may be required or approved by the relevant authorities. All floor areas are approximate measurements only and are subject to final survey. The balcony shall not be enclosed except with the approved balcony screen. For an illustration of the approved balcony screen, please refer to the diagram annexed hereto as "Annexure 1".

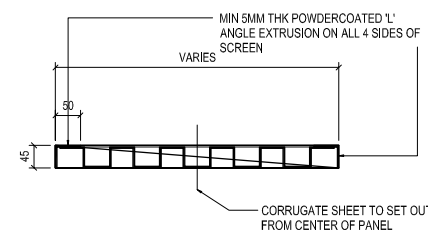
All plans are subject to change as may be required or approved by the relevant authorities. All floor areas are approximate measurements only and are subject to final survey. The balcony shall not be enclosed except with the approved balcony screen. For an illustration of the approved balcony screen, please refer to the diagram annexed hereto as "Annexure 1".

# Annexure 1

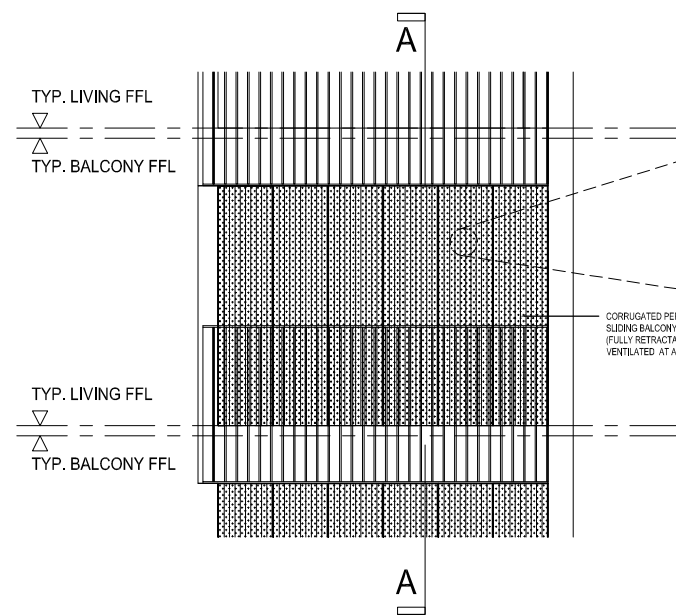
## Approved Balcony Screen



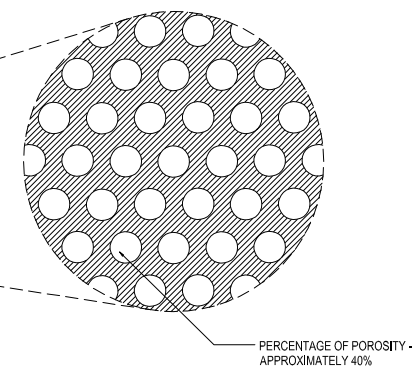
Typical Retractable Balcony Screen



Sliding Panel Detail



Typical Retractable Balcony Screen Elevation (Closed Position)



Perforated Finish

Premium  
Palette

Note:  
1. The balcony shall not be enclosed unless with the approved balcony screen (as shown above)  
2. The installation and cost of the screen shall be borne by the Purchaser



For illustration purposes only



For illustration purposes only



For illustration purposes only

## A Sophisticated Palette

A carefully chosen material palette lends elegance to the interiors of Royalgreen. The living and dining areas come with marble flooring, while the bedrooms have timber floors. The overall look is understated, tasteful, and refined.



## Premium Fittings



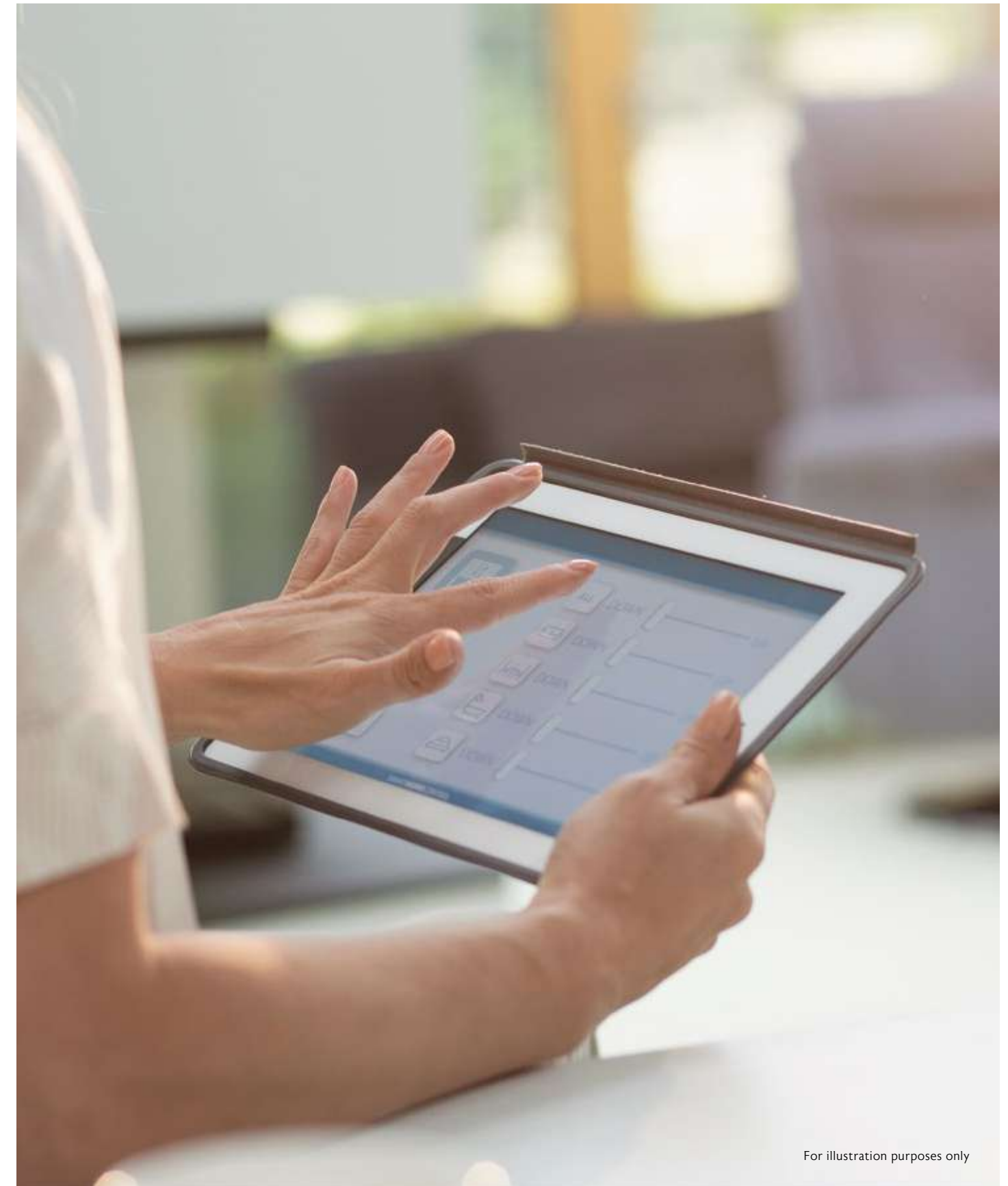
### Kitchen Appliances



### Wares and Fittings



## Smart Home Features



Smart Hub



Smoke Detector



Smart Parcel Box



Digital Lock Set



Air-conditioner Control



Smart Intercom

The Unit will be equipped with a wireless smart home readiness hub ("wireless smart home hub") and air-conditioner ("AC") control for all fan coil unit within the Unit. The Purchaser will be responsible to (1) make arrangements with the third party vendor providing the wireless smart home hub for a one-time set up of the wireless smart home hub in connection with the use of the ACs; and (2) engage an independent internet service provider for the subscription of internet service in the Unit, if desired. The wireless smart home hub will be provided to the Unit even if the Purchaser does not intend to arrange with the third party vendor to set up the wireless smart home hub in the Unit. The make, model, brand, design and technology of the wireless smart home hub to be provided shall be subject to the Vendor's selection and market availability.

THE BUKIT TIMAH  
COLLECTION



ROYALGREEN

Developer  
Sky Top Investments Pte Ltd  
(UEN: 201311463R)

Developer's Licence No.  
C1300

Tenure of Land  
Estate in Fee Simple (Freehold)

Legal Description  
Lot 04954N MK 04 at Anamalai Avenue,  
Bukit Timah Road, Lily Avenue

Encumbrances on the Land  
Mortgage in favour of United Overseas Bank Limited

Expected Date of Vacant Possession  
31 December 2022

Expected Date of Legal Completion  
31 December 2025

PRIME DISTRICT 10



长春产业  
ALLGREEN PROPERTIES

**Huttons**<sup>®</sup>  
The Agency of Choice

HUTTONS ASIA PTE LTD      ESTATE AGENT LICENCE NO: L3008899K

While all reasonable care has been taken in preparing this brochure, the vendor and its agent(s) shall not be held responsible for any inaccuracies or omissions. All statements are believed to be correct but shall not be regarded as statements or representations of fact. Visual representations including models, drawings, illustrations, photographs, art renderings and graphic representations portray artistic impressions only and are not to be taken as representations of fact. Floor areas and other measurements are approximate only and are subject to final survey. All information, plans, specifications and visual representation are current at the time of print and are subject to changes as may be required or approved by the vendor and/or the relevant authorities. The Sale and Purchase Agreement shall form the entire agreement between the vendor and the purchaser and shall in no way be modified by any statements or representations (whether contained in this brochure or given by the vendor's agent(s) or otherwise). The vendor reserves the right to modify any part or parts of the building, housing project, development and/or any unit prior to completion as directed or approved by the relevant authorities.