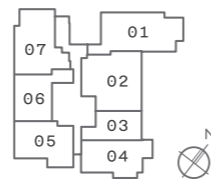


YOUR FREEHOLD HOME

	01	02	03	04	05	06	07
A	TYPE D(PH)	TYPE D1(PH) Premium	TYPE B3(PH)	TYPE C3(PH) Premium	LAP POOL / INDOOR GYM		
5					TYPE B2	TYPE B	TYPE C
4	TYPE C1	TYPE C2 Premium	TYPE A	TYPE B1	TYPE B2	TYPE B	TYPE C
3	TYPE C1	TYPE C2 Premium	TYPE A	TYPE B1	TYPE B2	TYPE B	TYPE C
2	TYPE C1	TYPE C2 Premium	TYPE A	TYPE B1	TYPE B2	TYPE B	TYPE C
1	COMMUNAL FACILITIES						
B	CAR PARKING						

- 1-Bedroom
- 2-Bedroom
- 2-Bedroom + 1
- 2-Bedroom + 1
- 3-Bedroom
- 3-Bedroom + 1
- 3-Bedroom + 1 (Premium)
- 2-Bedroom Penthouse
- 3-Bedroom (Premium) Penthouse
- 4-Bedroom + 1 Penthouse
- 4-Bedroom (Premium) Penthouse

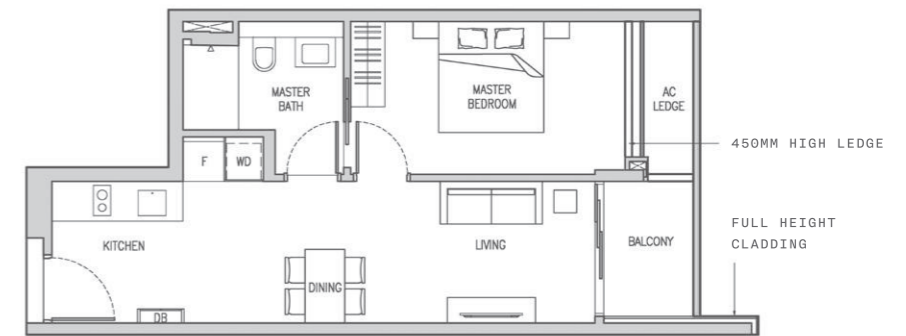


1 - BED ROOM

Claydence

TYPE A
57 sqm / 614 sqft

- #02 - 03
- #03 - 03
- #04 - 03



- F FRIDGE
- WD WASHER DRYER
- DB DISTRIBUTION BOX
- ST STORAGE



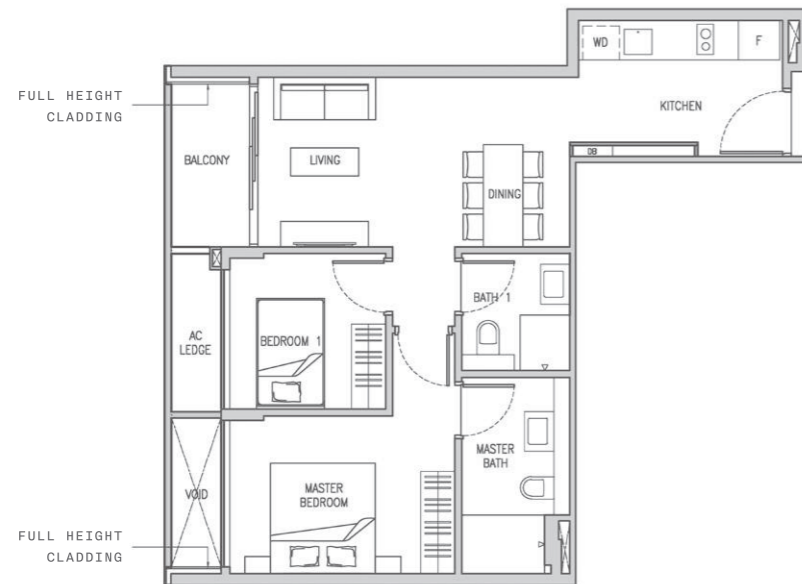
Area includes air conditioner (AC) ledge, balcony, roof terrace and strata void where applicable. The above plans are subject to change as may be approved by the relevant authorities. All floor plans are approximate measurements only and are subject to government re-survey. The balcony shall not be enclosed unless with approved balcony screen. The installation and cost of the screen shall be borne by the purchaser.

2 - BED ROOM

TYPE B

73 sqm / 786 sqft

- #02 - 06
- #03 - 06
- #04 - 06
- #05 - 06



F FRIDGE
 WD WASHER DRYER
 DB DISTRIBUTION BOX
 ST STORAGE



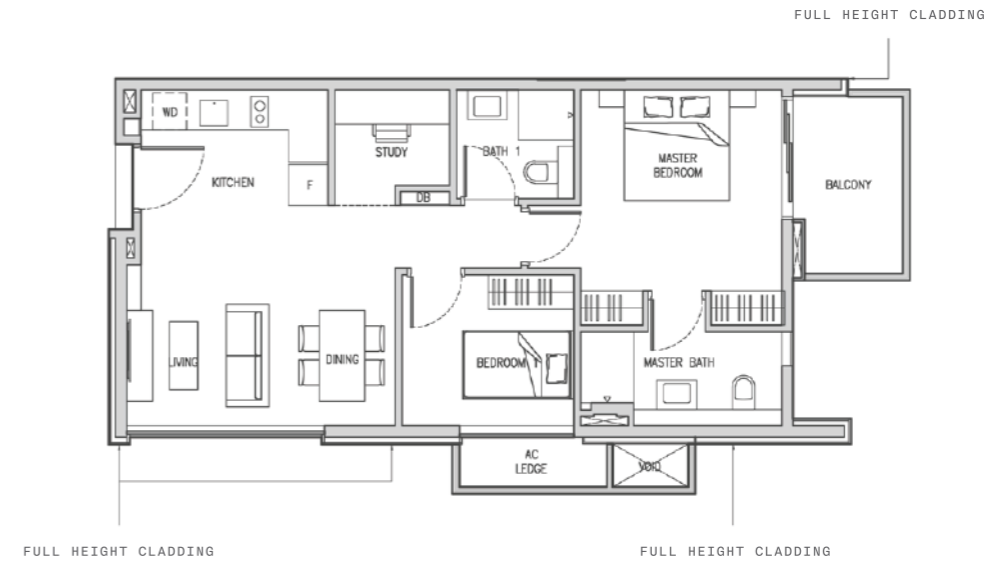
Area includes air conditioner (AC) ledge, balcony, roof terrace and strata void where applicable. The above plans are subject to change as may be approved by the relevant authorities. All floor plans are approximate measurements only and are subject to government re-survey. The balcony shall not be enclosed unless with approved balcony screen. The installation and cost of the screen shall be borne by the purchaser.

2 - BED ROOM + 1

TYPE B1

81 sqm / 872 sqft

- #02-04
- #03-04
- #04-04



F FRIDGE
 WD WASHER DRYER
 DB DISTRIBUTION BOX
 ST STORAGE



Area includes air conditioner (AC) ledge, balcony, roof terrace and strata void where applicable. The above plans are subject to change as may be approved by the relevant authorities. All floor plans are approximate measurements only and are subject to government re-survey. The balcony shall not be enclosed unless with approved balcony screen. The installation and cost of the screen shall be borne by the purchaser.

2 - BEDROOM + 1

TYPE B2

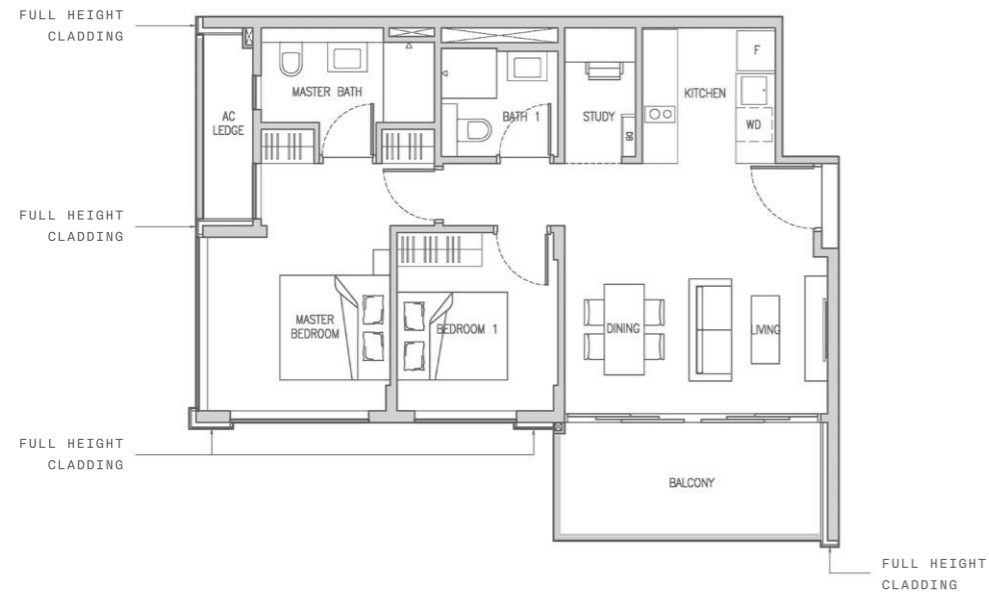
85 sqm / 915 sqft

#02 - 05

#03 - 05

#04 - 05

#05 - 05



F FRIDGE
WD WASHER DRYER
DB DISTRIBUTION BOX
ST STORAGE



Area includes air conditioner (AC) ledge, balcony, roof terrace and strata void where applicable. The above plans are subject to change as may be approved by the relevant authorities. All floor plans are approximate measurements only and are subject to government re-survey. The balcony shall not be enclosed unless with approved balcony screen. The installation and cost of the screen shall be borne by the purchaser.

3 - BEDROOM

TYPE C

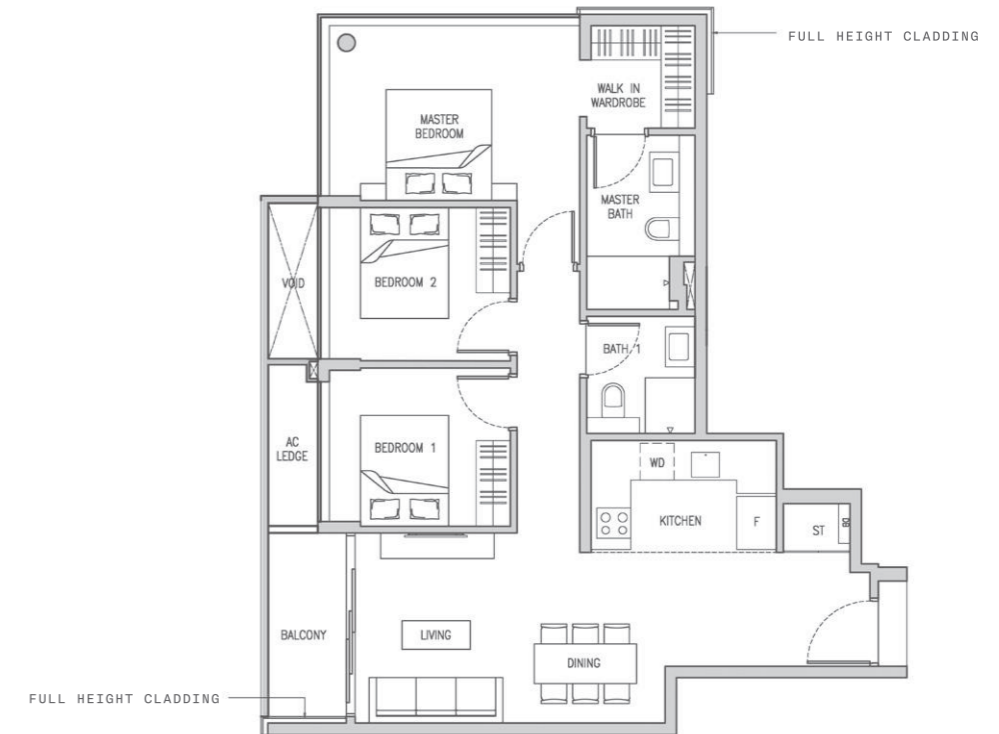
100 sqm / 1076 sqft

#02 - 07

#03 - 07

#04 - 07

#05 - 07



F FRIDGE
WD WASHER DRYER
DB DISTRIBUTION BOX
ST STORAGE



Area includes air conditioner (AC) ledge, balcony, roof terrace and strata void where applicable. The above plans are subject to change as may be approved by the relevant authorities. All floor plans are approximate measurements only and are subject to government re-survey. The balcony shall not be enclosed unless with approved balcony screen. The installation and cost of the screen shall be borne by the purchaser.

3 - BEDROOM + 1

TYPE C1

112 sqm / 1206 sqft

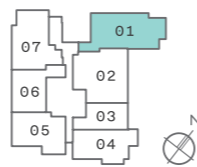
#02 - 01

#03 - 01

#04 - 01



F FRIDGE
WD WASHER DRYER
DB DISTRIBUTION BOX
ST STORAGE



Area includes air conditioner (AC) ledge, balcony, roof terrace and strata void where applicable. The above plans are subject to change as may be approved by the relevant authorities. All floor plans are approximate measurements only and are subject to government re-survey. The balcony shall not be enclosed unless with approved balcony screen. The installation and cost of the screen shall be borne by the purchaser.

3 - BEDROOM + 1 (PREMIUM)

TYPE C2

122 sqm / 1313 sqft

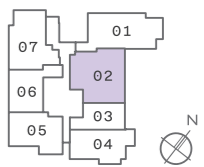
#02 - 02

#03 - 02

#04 - 02



F FRIDGE
WD WASHER DRYER
DB DISTRIBUTION BOX
ST STORAGE

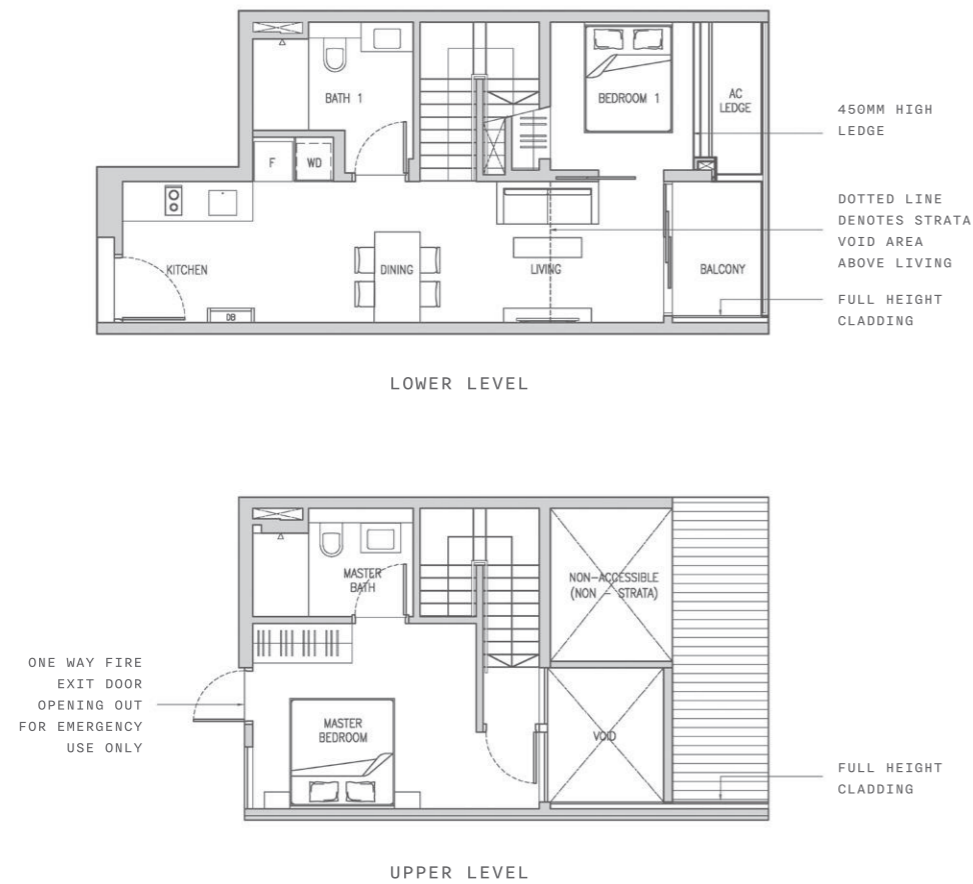


Area includes air conditioner (AC) ledge, balcony, roof terrace and strata void where applicable. The above plans are subject to change as may be approved by the relevant authorities. All floor plans are approximate measurements only and are subject to government re-survey. The balcony shall not be enclosed unless with approved balcony screen. The installation and cost of the screen shall be borne by the purchaser.

2 - BEDROOM PENTHOUSE

TYPE B3(PH) 91 sqm / 980 sqft

#05-03



F FRIDGE
WD WASHER DRYER
DB DISTRIBUTION BOX
ST STORAGE

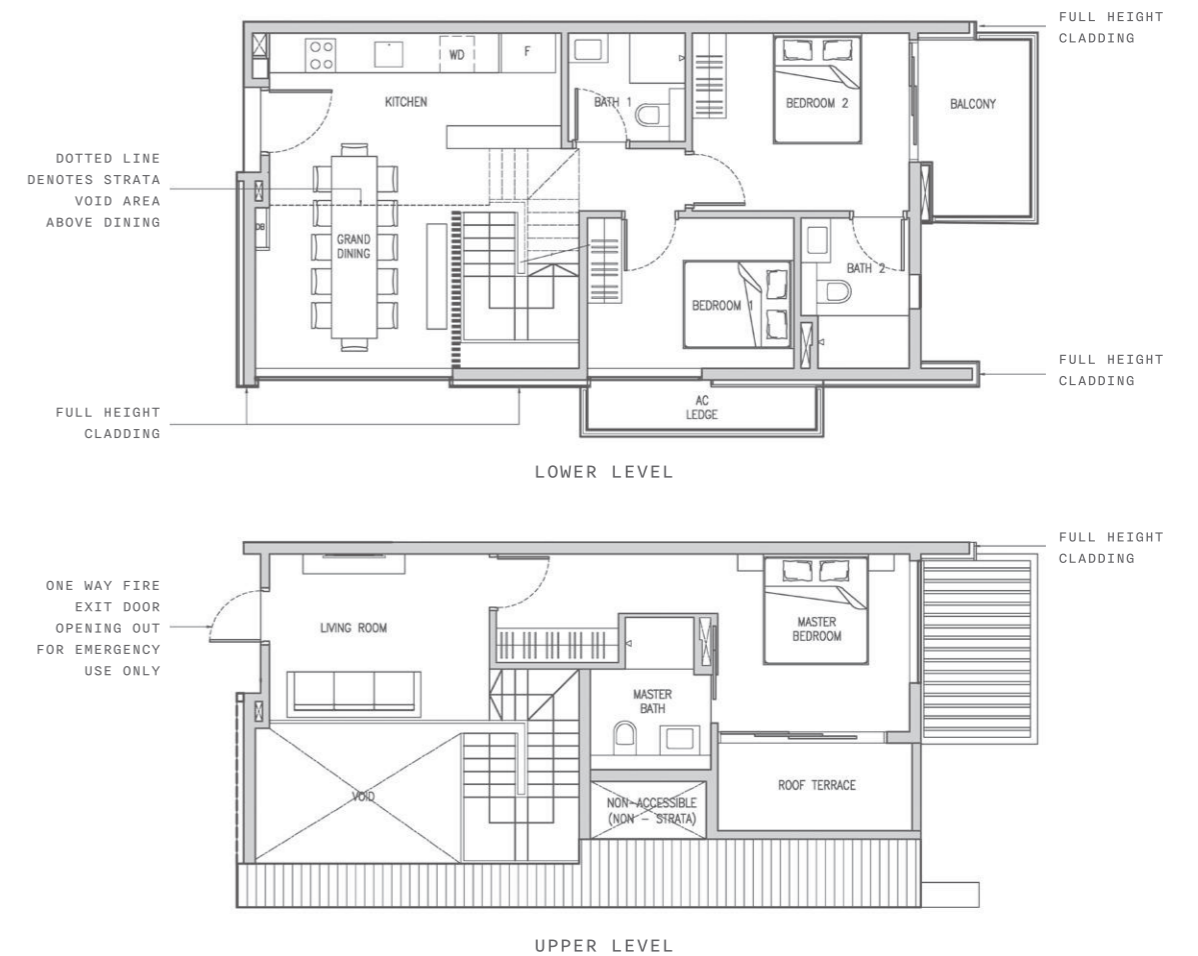


Area includes air conditioner (AC) ledge, balcony, roof terrace and strata void where applicable. The above plans are subject to change as may be approved by the relevant authorities. All floor plans are approximate measurements only and are subject to government re-survey. The balcony shall not be enclosed unless with approved balcony screen. The installation and cost of the screen shall be borne by the purchaser.

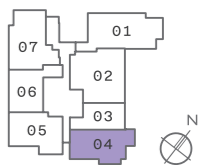
3 - BEDROOM (PREMIUM) PENTHOUSE

TYPE C3(PH) 137 sqm / 1475 sqft

#05-04



F FRIDGE
WD WASHER DRYER
DB DISTRIBUTION BOX
ST STORAGE



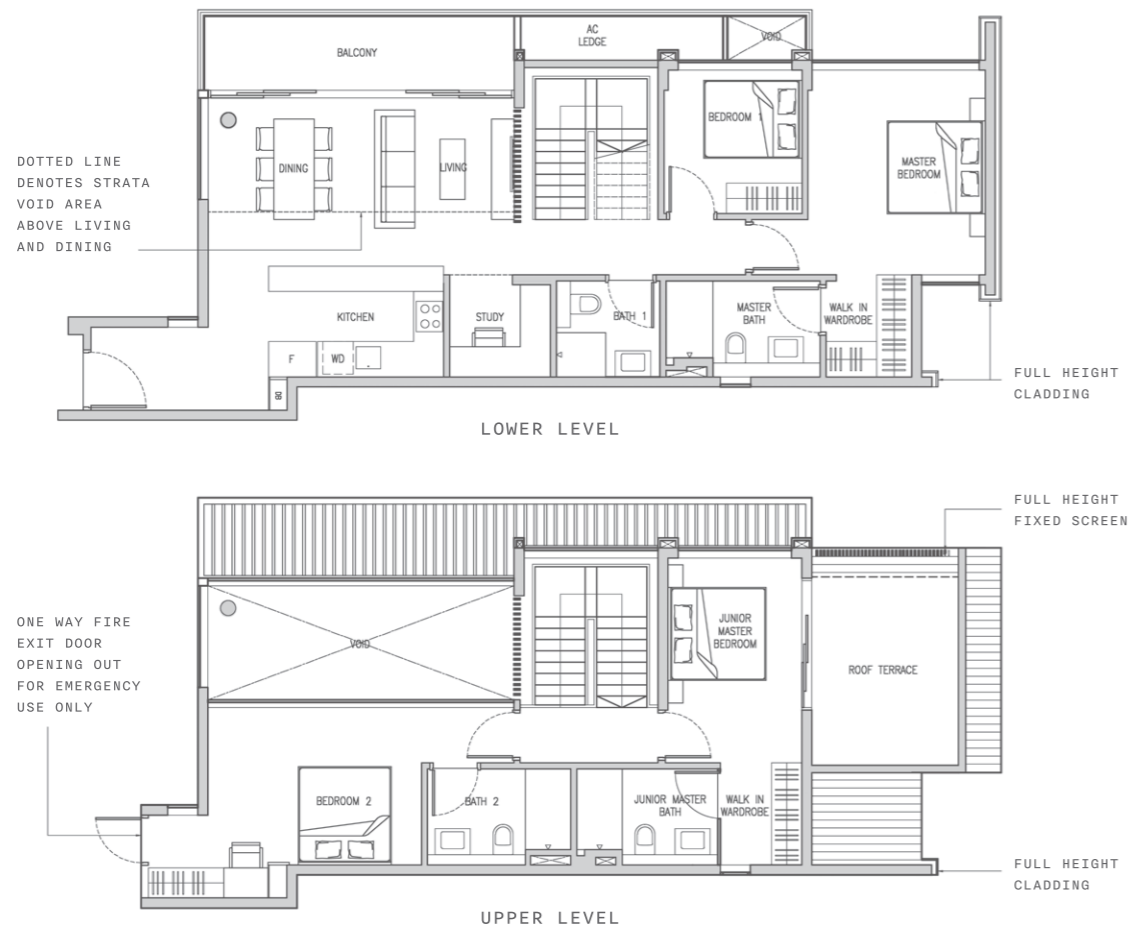
Area includes air conditioner (AC) ledge, balcony, roof terrace and strata void where applicable. The above plans are subject to change as may be approved by the relevant authorities. All floor plans are approximate measurements only and are subject to government re-survey. The balcony shall not be enclosed unless with approved balcony screen. The installation and cost of the screen shall be borne by the purchaser.

4 - BEDROOM + 1 PENTHOUSE

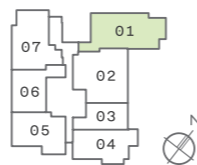
TYPE D(PH)

201 sqm / 2164 sqft

#05-01



F FRIDGE
WD WASHER DRYER
DB DISTRIBUTION BOX
ST STORAGE



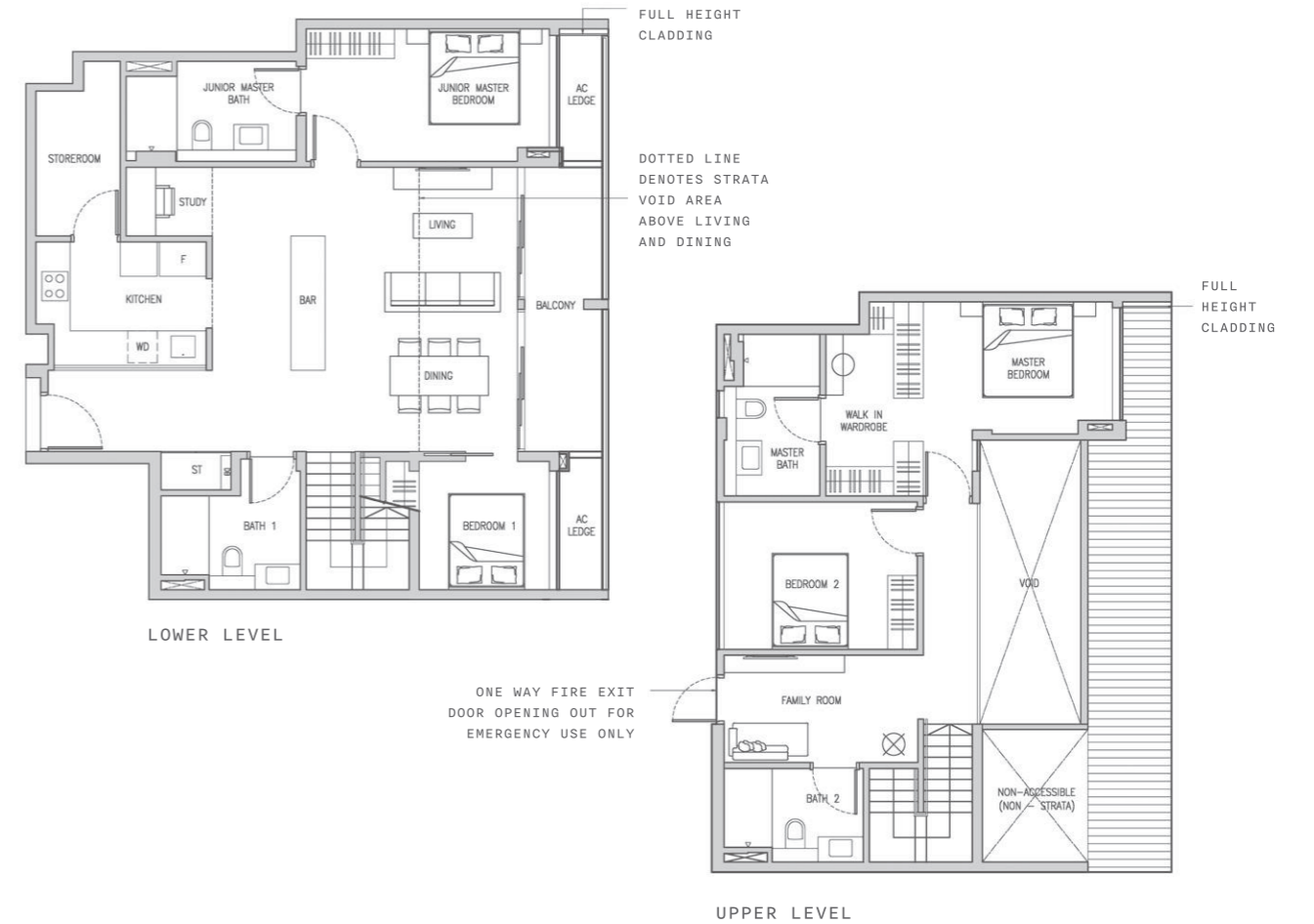
Area includes air conditioner (AC) ledge, balcony, roof terrace and strata void where applicable. The above plans are subject to change as may be approved by the relevant authorities. All floor plans are approximate measurements only and are subject to government re-survey. The balcony shall not be enclosed unless with approved balcony screen. The installation and cost of the screen shall be borne by the purchaser.

4 - BEDROOM (PREMIUM) PENTHOUSE

TYPE D1(PH)

203 sqm / 2185 sqft

#05-02



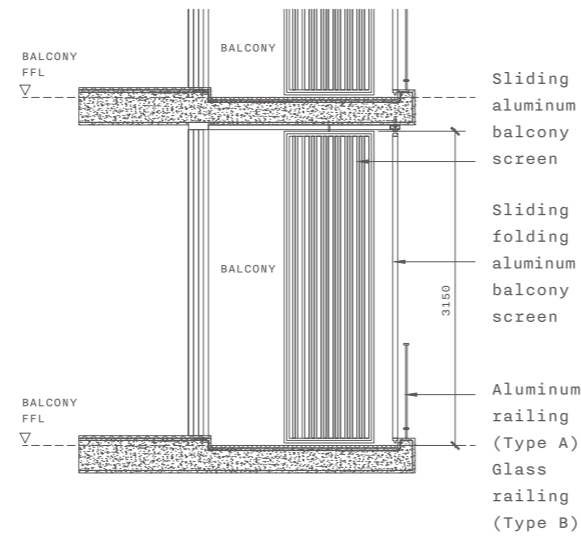
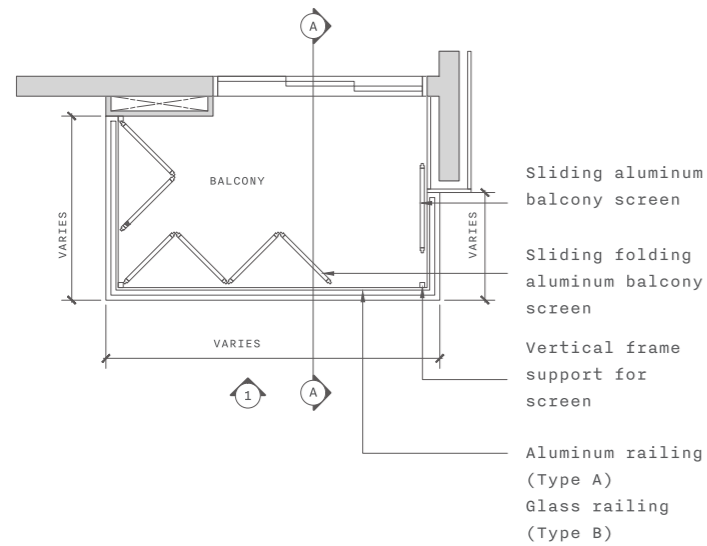
F FRIDGE
WD WASHER DRYER
DB DISTRIBUTION BOX
ST STORAGE



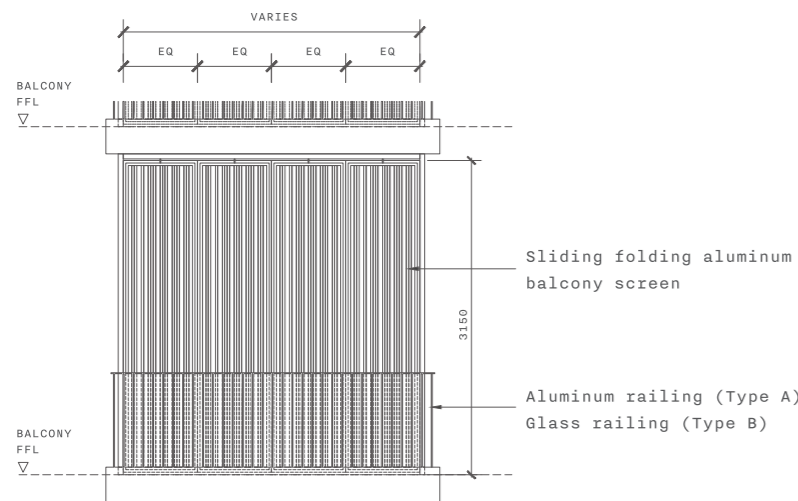
Area includes air conditioner (AC) ledge, balcony, roof terrace and strata void where applicable. The above plans are subject to change as may be approved by the relevant authorities. All floor plans are approximate measurements only and are subject to government re-survey. The balcony shall not be enclosed unless with approved balcony screen. The installation and cost of the screen shall be borne by the purchaser.

APPROVED SCREEN FOR BALCONY

**TYPICAL BALCONY SCREEN
- PLAN**



**TYPICAL BALCONY SCREEN
- SECTION A - A**



**TYPICAL BALCONY SCREEN
- ELEVATION 1**



NOTES:

1. The balcony shall not be enclosed unless with the approved screen as shown above ("approved screen");
2. Balcony screen is not provided, the cost of screen and installation of the approved screen shall be borne by the purchaser; and
3. On-site verification is necessary to obtain actual measurement prior to fabrication and installation of the approved screen.

EQ - Equidistant

HONG HOW GROUP



Real Estate Developer,
Investor & Development Manager

Hong How Group is a Singapore-based estate developer and investor with over 40 years of experience. Our wide experience includes commercial, residential, mixed and industrial developments. We seek transformative projects with special interest in and deep knowledge of shophouse conservation. Hong How Group has won several industry awards in conservation, built quality and greenery.

Our reputation for delivering consistently high quality development of enduring value is sustained by hands-on involvement in the entire development process. We manage all properties held for long term investments to ensure proper upkeep and pre-emptive maintenance. Our Group's past developments include Lighthouse, Quartet on Ford, 15 Little Road and URA Architectural Heritage (AHA) award-winning 36 & 38 Armenian Street and recently, 292 Joo Chiat Road.



URA AHA 2022

Co-Working offices at 292 Joo Chiat Road in a restored 4-storey 1950s art décor commercial street block near Dunman Road junction.



URA AHA 2010

Off-street shops & SOHO offices at 36 & 38 Armenian Street within a transformed corner cluster of 1930s & 1940s art décor commercial.



Lighthouse

51-unit resort style Lighthouse condominium within short walk to Pasir Ris beach.

DEVELOPER
HONG HOW LAND PTE LTD

ARCHITECT
DS ARCHITECTS PTE LTD

DESIGN CONSULTANT
WALLFLOWER PTE LTD

LANDSCAPE DESIGN
COEN DESIGN INTERNATIONAL PTE LTD

STRUCTURAL ENGINEER
C P LIM & PARTNERS LLP

M&E ENGINEER
DELTA CREST PTE LTD

QUANTITY SURVEYOR
1MH & ASSOCIATES

CREATIVE
DEEPPOCKET BRANDING & DESIGN PTE LTD

Developer: Hong How Land Pte Ltd (A joint venture of Hong How Corporation Pte Ltd and Marrison Capital Pte Ltd) • UEN: 197701538M • Developer's Licence No.: C1443 • Tenure of Land: Estate in Fee Simple • Encumbrances: Mortgage(s) in favour of United Overseas Bank • Location: Lot No. 06325L, 06327M, 09444V and 97130T of Mukim 26 at 99 Still Road, Singapore 423989 • Expected Date of Vacant Possession: 28 April 2026
• Expected Date of Legal Completion: 28 April 2029

While every reasonable care has been taken in the preparation of this brochure, the developer and its agent cannot be held responsible for any inaccuracies or omissions. All statements shall not be regarded or relied upon as statements or representations of fact. All information and specifications, renderings, visual representations and plans are current at the time of publication and are subject to change as may be required by us and/or the competent authorities. The brand, colour and model of all materials, fittings, equipment, finishes, installations and appliances shall be provided subject to Architect's selection, market availability and are at the sole discretion of the developer. All information, specifications and statements herein shall not be treated to form part of an offer or contract. Floor plans are not to scale and subject to amendments as may be required by the relevant authorities. Visual representations, digital images, models, sales gallery displays, illustrations, photographs, drawings, art renderings and other graphic representations and references, not limited to landscape and furniture, are intended to portray only artistic impressions of the development and cannot be regarded as representations of fact. Floor areas are approximate measurements and are subject to final survey. The Sale and Purchase Agreement shall form the entire agreement between the developer and the purchaser and shall supersede all statements, representations or promises made prior to the signing of the Sale and Purchase Agreement and shall not be modified by any statements, representations or promises made by the developer or the marketing agents.